

Education Bureau

Circular Memorandum No. 121/2020

(Chinese version will follow)

From : Permanent Secretary for Education To: Supervisors and Heads of all Aided Secondary Schools - for necessary action

Ref : EDB/FIN(A)/F&A/65/23(R) Date: 7 August 2020

2019/2020 Annual Audited Accounts of Aided Secondary Schools

Purpose

This circular memorandum requests Supervisors of aided secondary schools to submit their annual audited accounts for the accounting year ended 31 August 2020. **The deadline for submission of the annual audited accounts is 31 December 2020.** Please note that the annual audited accounts mentioned in this circular refer to those recording the financial transactions of the schools before the establishment of incorporated management committees (IMC). They do not include the accounts of IMCs.

Background

2. Section 70 of the Code of Aid for Secondary Schools (CASS) requires the accounts of aided secondary schools to be audited by Certified Public Accountants / Public Accountants registered under the Professional Accountants Ordinance. Schools are also required to submit the annual audited accounts to the Permanent Secretary for Education (PS(Ed)) at such times and in such manner as she may determine. For guidelines on engagement of auditors, please see Education Bureau Circular (EDBC) No. 5/2014.

Submission Requirements

3. The annual audited accounts to be submitted by the schools should comprise the School Supervisor's certificate, the Auditor's Report and audited financial statements on their operations. To facilitate preparation by schools, the relevant pro-formas of the annual accounts in Excel format can be downloaded at the following address -

<http://www.edb.gov.hk/circular/adhocforme/aidsec.xls>

School Supervisors are required to submit the accounts in the prescribed formats.

4. Reference notes for auditors of schools are at **Annex 1**. Schools should convey the certification requirements as stated in paragraph 5(a) to (d) of **Annex 1** to their auditors prior to the commencement of audit. Please note that the certification requirements should be strictly complied with.

5. The accounts must be signed by the School Supervisors and forwarded together with the signed Auditor's Reports to the address shown below on or before 31 December 2020.

School Audit Section, Finance Division, Education Bureau,
Room 1509, 15/F., Wu Chung House,
213 Queen's Road East, Wanchai, Hong Kong.

To facilitate our examination of the annual audited accounts, the softcopy of the annual audited accounts (in the EXACT EXCEL FILE downloaded from the address as mentioned in paragraph 3 above with the same file name) must also be submitted in addition to the hardcopy by the said due date –

- electronically via the “Communication and Delivery System (CDS) Module” in Web-based School Administration and Management System (WebSAMS). Detailed procedures are described at **Annex 2**;
or
- by submitting a CD (for non-WebSAMS users only).

Please ensure that the softcopy and the hardcopy of the annual audited accounts submitted are identical. Please note that according to Section 71 of the CASS, if a school fails to submit annual audited accounts or delays the submission of such accounts without reasonable cause, PS(Ed) may temporarily withhold payment of such proportion of grant made monthly to the school as she shall determine.

6. For closed schools, the final audited accounts covering the period up to and including the last day of school operation must be submitted **not later than four months** from the date of cessation of operation.

7. Where an aided secondary school operates aided primary classes, separate operating statements for the primary section should be prepared. However, a consolidated balance sheet for both the secondary and primary sections will be accepted.

8. Where an aided secondary school operates a private section or a boarding section in the same premises and where consolidated accounts in respect of all the sections are prepared for presentation to the School Council or Sponsoring Body, the Supervisor of the aided secondary school should forward a copy of the consolidated accounts to this Bureau in addition to the requirement specified in paragraphs 3 and 4 above. Should the accounting year for the consolidated accounts ends on a date other than 31 August, the latest set of such accounts must be sent.

9. If PS(Ed) has permitted a school to transfer funds from the Subscriptions Account to other account(s) which are kept separately by the Sponsoring Body for educational development or other purposes, the School Supervisor should provide an annual statement for each of these other accounts. These statements should also be audited and cover the same period as the audited accounts of the aided secondary school.

10. You may wish to refer to the “Tips on Handling Government Subventions for Aided Schools” (August 2020 version) (<http://www.edb.gov.hk> > School Administration and Management > Financial Management > Information on Subsidy > Reference Materials on Handling Government Subventions for Aided Schools) for reference. Please also draw it to the attention of your auditors. Upon completion of the audit, it is usual practice for the auditors to issue to schools a management letter, drawing attention to weaknesses in internal control together with recommendations for improvement in the school's accounting system. School Supervisors are requested to implement the auditors' recommendations. The auditors should also send a copy of the management letter to this Bureau for information.

Enquiries

11. For enquiries on this circular memorandum, please contact Treasury Accountant (Audit) 1 or Treasury Accountant (Audit) 2 at 2892 6259 or 2892 5737. For enquiries regarding the submission of the annual audited accounts via WebSAMS, please contact Treasury Accountant (Systems) 2 at 2892 5423.

(Ms. Amy CHUNG)
for Permanent Secretary for Education

Encl.

**Reference Notes
for Auditors of Aided Secondary Schools
for the Accounting Year Ended 31 August 2020**

Section 70 of the Code of Aid for Secondary Schools (CASS) requires the accounts of aided secondary schools to be audited by Certified Public Accountants / Public Accountants registered under the Professional Accountants Ordinance^{Note}. This requirement is laid down in order to enable the Permanent Secretary for Education (PS(E)) to satisfy that the grants have been properly applied to the purposes for which they were paid.

2. When auditing the school accounts, the Auditors should satisfy that the schools have complied with the requirements specified in:

- (a) the CASS and the supporting appendices thereto;
- (b) the relevant letters, circulars and guidelines issued to aided secondary schools by Education Bureau (EDB); and
- (c) the relevant letters issued by EDB to the schools concerning matters which require the written approval of PS(E).

3. The Auditors are also required to ascertain the correct balances of individual grant accounts. Please note that all grant payments to schools are supported by remittance advices issued by the Treasury. Schools should file the remittance advices **as well as other relevant correspondences from EDB (e.g. the annual payment statement of non-recurrent and capital grants provided by the Capital and Kindergarten Subventions Section of EDB)** properly and make them available for audit verification. EDB will not provide confirmation on the amount of grants paid to schools. A table showing the relevant documents, points for special attention and year-end surplus treatment of the individual grants is at **Annex 1A**. Unless otherwise specified in **Annex 1A**, the year-end deficit of all grant accounts should be transferred to the Subscriptions: Income and Expenditure Account. The notes which follow are issued for the guidance to Auditors in directing their attention to certain matters in respect of which PS(E) requires to be satisfied when examining the school accounts.

4. Please note that the annual audited accounts mentioned in this annex refer to those recording the financial transactions of the schools before the establishment of incorporated management committees (IMC). They do not include the accounts of IMCs.

Note: This means “certified public accountants (practising)” with effect from the commencement of the Professional Accountants (Amendment) Ordinance 2004 on 8 September 2004. “Certified public accountant (practising)” means a certified public accountant holding a practising certificate.

5. Auditors should submit Auditor's Reports on the school accounts, and each statement to the accounts should be stamped with the identification chop of the Auditors. The Auditors should state in their reports whether in their opinion-

- (a) the schools have used the government subventions in accordance with the rules and ambits of the grants as promulgated in the CASS, relevant letters, circulars and guidelines issued by EDB;
- (b) the balances of individual grant accounts are, in all material respects, correct;
- (c) the schools have complied with the accounting requirements of the CASS, the relevant letters, circulars and guidelines issued by EDB and such instructions as may be given by the Permanent Secretary for Education, and the accounts give a true and fair view of the state of the schools' affairs as at 31 August 2020 and of their results for the accounting year then ended; and
- (d) in the case of consolidated accounts submitted by a school which operates also a private section or boarding section, the school has complied with the accounting requirements of the CASS, the relevant letters, circulars and guidelines issued by EDB and such instructions as may be given by the Permanent Secretary for Education, and the accounts give a true and fair view of the state of affairs as at 31 August 2020 and of its results for the accounting year then ended of the aided secondary school and such other section dealt with thereby.

By the term "true and fair", it means that the schools have properly prepared the accounts in accordance with the requirements of the CASS, the relevant letters, circulars and guidelines issued by EDB and such instructions as may be given by PS(Ed) to aided secondary schools.

6. The Auditors should draw the attention of the School Supervisors to weaknesses in internal controls discovered during the course of their audit (e.g. collections from students for carrying out extra-curricular activities and the corresponding expenditures not properly accounted for in the school's books of accounts) and that they should report items which are considered material in a letter (i.e. management letter) with recommendations for improvement. The Auditors should also send a copy of the management letter to EDB for information. Please refer to the "Tips on Handling Government Subventions for Aided Schools" (August 2020 version) (<http://www.edb.gov.hk> > School Administration and Management > Financial Management > Information on Subsidy > Reference Materials on Handling Government Subventions for Aided Schools) and Chapter 6, School Finance Matters of the School Administration Guide (SAG) and relevant circulars including but not limited to EDBC No. 14/2003 for acceptance of donations, EDBC No. 5/2011 for letting out school premises, EDBC No. 4/2013 for procurement procedures, EDBC No. 10/2016 for trading operations and EDBC No. 150/2019 for OEBG.

7. If the Auditors are of the opinion that proper books of accounts have not been kept by the school, or if the balance sheet and income and expenditure account are not in agreement with the books of accounts, or if the Auditors fail to obtain from the school all the information and explanations which, to the best of their knowledge and belief, are necessary for the purpose of their audit, they should make appropriate qualifications in their reports.

8. Please note that according to Sections 73(a) and (b) of the CASS, where the School Management Committee operates a private section or boarding section which does not receive financial assistance under the CASS, the accounts of such private section or boarding section should be kept separately from those of the aided section and audited; and should specify any subvention received from departments of the Government other than the Education Bureau. The accounting year, to which such accounts should refer, should be from the first day of September of one year to the thirty-first day of August of the next, except for financial year basis as approved by PS(Ed). The Supervisor of an aided school should, when submitting accounts, also submit accounts relating to any private section or boarding section of such school; and these accounts should refer to the same period of time as those of the aided school.

9. Please note that secondary schools under the development option of “Injection of Additional Resources by School Sponsoring Bodies” should separately disclose the injection and the use of funds in the Subscriptions Account and in the Notes to the Financial Statements.

10. **To facilitate EDB’s examination of the annual audited accounts, the softcopy of the annual audited accounts (using the EXACT EXCEL FILE downloaded from the address mentioned below with the same file name) must also be provided to schools for submission to EDB. Please also ensure that the softcopy and the hardcopy of the annual audited accounts are identical.**

<http://www.edb.gov.hk/circular/adhocforme/aidsec.xls>

Points for special attention for individual grants

Ref. No.	Grant/Account Name (Statement No.)	Relevant EDB document	Points for special attention and year-end surplus treatment
1	Operating Expenses Block Grant (OEBG) - General Domain	EDBCM No.150/2019	<p>(a) Schools are free to decide the amount to be spent on individual constituent grants.</p> <p>(b) If surpluses are available, schools may use such funds to top up expenditure on items in the Special Domain and other subsidies outside the OEBG, unless otherwise specified in the relevant circulars or guidelines issued by EDB.</p> <p>(c) Schools are allowed to retain surplus balance up to 12 months' provision of OEBG. When the surplus (excluding the funds set aside as outstanding commitment for the payment of Severance Payment / Long Service Payment for staff as mentioned in (e) below) exceeds the 12 months' provision, schools are free to decide from which constituent grant the excess may be clawed back by EDB. Schools may consider paying the excess from the Special Domain first and then from the General Domain.</p> <p>(d) A reminder list of the usage of OEBG has been uploaded to EDB website as stated in para. 5 of EDBCM No.150/2019.</p> <p>(e) While deploying the constituent grants under the OEBG to employ staff, schools should set aside part of these grants for the payment of Severance Payment / Long Service Payment as outstanding commitment. In case these grants are insufficient to settle the payment, schools may deploy surplus in the General Domain of the OEBG to cover the deficit. Schools should keep a separate ledger for the Severance Payment / Long Service Payment and work out the amount payable to each staff concerned on their cessation of service. (Paragraph 3.7 and Appendix B of the OEBG User Guide of EDBCM No. 150/2019 refer.) Schools should provide such details in the Notes to the Financial Statements.</p>

Ref. No.	Grant/Account Name (Statement No.)	Relevant EDB document	Points for special attention and year-end surplus treatment
2	<p><i>Constituent grants</i></p> <p>School and Class Grant (3.2)</p>	<p>EDBC No.5/2011</p> <p>EDBCM No. 150/2019</p>	<p>(a) If a school lets any part of its premises for any purpose, the hire charges received should be apportioned and credited to the accounts in such proportions as required by PS(Ed).</p> <p>(b) Any fuel, light and power, water charges, telephone charges, minor repairs etc., in respect of non-school portions should not be charged to this Grant. Where separate bills are not available, proportionate deduction must be made. Any reimbursement of the above charges made to school should be credited to the expenditure account concerned directly.</p>
3	<p>Air-conditioning Grant (3.2)</p>	<p>EDBCM No. 150/2019</p>	
4	<p>Lift Maintenance Grant (3.2)</p>	<p>EDBCM No. 150/2019</p>	<p>For schools with the provision of lifts, stair lifts and / or hydraulic platforms under the School Improvement Programme, a recurrent subsidy is paid to meet expenditure on electricity charges and maintenance of lifts, stair lifts and hydraulic platforms. The recurrent subsidy is paid as a supplement to the School and Class Grant.</p>
5	<p>Air-conditioning Grant for Preparation Rooms of Laboratories (3.2)</p>	<p>EDBCM No. 150/2019</p>	

Ref. No.	Grant/Account Name (Statement No.)	Relevant EDB document	Points for special attention and year-end surplus treatment
6	<p>Administration Grant (School Section) / Revised Administration Grant (Boarding Section) (3.2)</p> <p>Administration Grant for Additional Clerical Assistant (3.2)</p>	<p><u>Administration Grant (School Section)</u> S.34 and Appendix 14/Attachment A of the Code of Aid for Secondary Schools</p> <p><u>Revised Administration Grant (Boarding Section)</u> S.39A and 39B of Vol.II of the Code of Aid for Special Schools</p> <p>Letter to individual schools</p> <p>EDBCM No. 150/2019</p>	<p>(a) The amount of janitor staff element in the Administration Grant payable to the school may be calculated either on the operating class basis or on the classroom equivalent basis. Schools are eligible for the higher amount of the grant calculated by either one of these methods.</p> <p>(b) Only the expenditure on employment of clerical staff and janitor staff and procurement of ancillary services (e.g. the cleaning of school premises) by contract should be charged to this account.</p> <p>(c) For PF / MPF, subsidy will not be provided to cover the employer's contribution for the portion of salaries paid by schools in excess of Administration Grant.</p> <p>(d) Starting from 2003/04 school year, exceptional approval may be granted to schools by the respective Regional Education Offices, upon successful application, to transfer their Special Domain surpluses to top up the costs to be incurred in the continued employment of janitor / clerical staff paid by the Administration Grant or Revised Administration Grant already committed by them. (Paragraph 4.9 of the OEBG User Guide of EDBCM No.150/2019 refers.)</p>
7	Recurrent English Language Grant (3.2)	EDBCM No.150/2019	
8	Practical and Technical Subjects (for mainstreamed schools) (3.2)	EDBCM No. 150/2019 Letter to individual schools	
9	Enhancement Grant (3.2)	EDBCM No. 150/2019	
10	Supplementary Grant for School-based Management (3.2)	EDBCM No. 150/2019	
11	Training and Development Grant (3.2)	EDBCM No. 150/2019	

Ref. No.	Grant/Account Name (Statement No.)	Relevant EDB document	Points for special attention and year-end surplus treatment
12	Composite Information Technology Grant (CITG) (3.2)	EDBCM Nos. 172/2004, 149/2006, 97/2007, 103/2008 and 150/2019	<p>(a) The following grants merged to form the recurrent CITG with effect from 2004/05 school year (paragraph 2 of EDBCM No. 172/2004):</p> <ul style="list-style-type: none"> - Recurrent grant of Multimedia Computer For Primary School (MMPS) Project; - Recurrent grant of IT in Education (ITED) Project; - Incentive grant for extending the opening hours of school's computer facilities; and - Cash grant for employing on-site Technical Support Service (TSS) or hiring TSS from a contractor. <p>(b) The maintenance of IT facilities which were procured by government funds under the following projects/programmes were subsumed into CITG provisions with effect from the 2006/07 school year (paragraph 3 of EDBCM No.149/2006):</p> <ul style="list-style-type: none"> - Information Technology in Education (ITEd) projects; - Information Technology Learning Centres (ITLCs); and - Multimedia Learning Centres (MMLCs). <p>(c) The maintenance of the following IT facilities which were procured by government funds were subsumed into CITG provisions for secondary schools with effect from the 2007/08 school year (paragraph 3 of EDBCM No. 97/2007):</p> <ul style="list-style-type: none"> - Projection systems for computer subject; - Computer equipment in the computer room(s); and - IT equipment in the computer laboratory of ex-prevocational schools.

Ref. No.	Grant/Account Name (Statement No.)	Relevant EDB document	Points for special attention and year-end surplus treatment
13	Consolidated Subject Grant (CSG)(3.2)	EDBCM Nos. 100/2009 , 110/2009, 111/2012 and 150/2019	<p>(d) The Bureau has decided to relax the usage of the CITG and increase the provision with effect from the 2008/09 school year. Schools can deploy their resources as appropriate to meet their operational needs in the following areas (paragraph 3 of EDBCM No. 103/2008):</p> <ul style="list-style-type: none"> - Purchase of IT-related consumables, e.g. ink cartridge, toner, paper, CD, projectors' light bulb and other non-inventory IT peripheral items (such as carphones, mouse, flash drivers, etc); - Purchase of digital resource materials for learning and teaching, including annual subscription / renewal fees for licences & software, and other charges for on-line learning resources; - Internet connectivity and Internet security services, including annual renewal of anti-virus software and firewalls, subscription / renewal of domain names; - Employment of technical support personnel / hire of TSS from service providers; - Extension of opening hours for school's IT facilities; - Arrangement of maintenance services for school's IT facilities procured by government funds; and - Upgrading and replacement of school's IT facilities. <p>(a) It is a new block grant under the General Domain of the OEBG to replace the subject and curriculum grants. (Paragraph 2 of EDBCM No. 100/2009 refers.)</p> <p>(b) As it is one of the constituent grants under the General Domain of the OEBG, the current practice for OEBG, such as the adjustment mechanism, payment schedule, accounting and reporting arrangements, surplus retention and claw back arrangement will be followed. (Paragraph 6 of EDBCM No. 100/2009 refers.)</p>
14	Base School School-based Speech Therapy Administration Recurrent Grant (3.2)	EDBC No. 13/2019 EDBCM No. 150/2019	Base schools of school clusters will receive a Base School School-based Speech Therapy Administration Recurrent Grant in each school year to cover the administration costs incurred by coordinating the implementation of School-based Speech Therapy Service amongst member schools.

Ref. No.	Grant/Account Name (Statement No.)	Relevant EDB document	Points for special attention and year-end surplus treatment
15	OEBG – Special Domain (3.3) <i>Constituent grants</i>	EDBCM No.150/2019	<p>(a) Each grant within the Special Domain is separate and no transfer will be allowed among the grants. Funds in this domain cannot be transferred out. Deficits in the constituent grants may be topped up with surplus from the General Domain unless otherwise specified in relevant circulars or letters to schools.</p> <p>(b) While deploying the constituent grants under the OEBG to employ staff, schools should set aside part of these grants for the payment of Severance Payment / Long Service Payment as outstanding commitment. In case these grants are insufficient to settle the payment, schools may deploy surplus in the General Domain of the OEBG to cover the deficit. Schools should keep a separate ledger for the Severance Payment / Long Service Payment and work out the amount payable to each staff concerned on their cessation of service. (Paragraph 3.7 and Appendix B of the OEBG User Guide of EDBCM No. 150/2019 refer.) Schools should provide such details in the Notes to the Financial Statements.</p>
16	School-based Support Scheme for schools with Intake of Newly Arrived Children (3.3)	EDBCM Nos. 150/2019 and 157/2019 Letter to individual schools	
17	Programme Funds for Implementation of Whole School Approach to Guidance and Discipline (3.3)	EDBC No. 16/2008 EDBCM No. 150/2019	
18	Boarding Grant Boarding Grant (for mainstreamed practical schools) (3.3)	S.43 of Vol.II of the Code of Aid for Special Schools EDBCM No. 150/2019 Letter to individual schools	Boarding fees included herein should be shown separately as other incomes.

Ref. No.	Grant/Account Name (Statement No.)	Relevant EDB document	Points for special attention and year-end surplus treatment
19	Capacity Enhancement Grant (CEG) (3.3)	EDBCM No. 150/2019	Annual plans on the use of CEG for the 2019/20 school year should be drawn up and, with the endorsement of the SMC, uploaded onto the homepage of the schools before end of October 2019. The CEG released is subject to clawback if schools fail to take the above actions. (Paragraph 6 of EDBCM No. 150/2019 refers.)
20	School-based Educational Psychology Service (SBEPS) Grant (3.3)	EDBCM Nos. 16/2019 and 150/2019 SBEPS Guide	The base school shall ensure that this Grant is used for SBEPS-related expenditures including: (a) hiring of professional supervision for EP; (b) service coordination; and (c) general expenses, such as printing and stationery, consumable stores, office utilities, replenishment of furniture and equipment, etc..
21	School-based Management Top-up Grant (3.3)	EDBC No. 20/2019 EDBCM No. 150/2019	Schools are advised to, on a need basis, deploy the grant flexibly to: (a) Support the operation of their SMCs; and (b) Strengthen training for school managers / SMC members.
22	School-based Speech Therapy Administration Recurrent Grant (3.3)	EDBC No. 13/2019 EDBCM No. 150/2019	Schools are advised to use the grant to procure necessary resources and materials for speech therapy and meet related expenditures for the implementation of school-based speech therapy services. (Paragraph 21 of EDBC No. 13/2019 refers.)

Ref. No.	Grant/Account Name (Statement No.)	Relevant EDB document	Points for special attention and year-end surplus treatment
23	<p>Salaries Grant (School Section) (4.1)</p> <p>Salaries Grant (Boarding Section for mainstreamed schools) (4.2)</p>	<p><u>Salaries</u></p> <p><u>School Section</u> S.19 to 34 of the Code of Aid for Secondary Schools</p> <p><u>Boarding Section</u> S.18 to 38 of Vol.II of the Code of Aid for Special Schools</p> <p>EDBC Nos. 60/1999, 8/2010, 10/2015, 12/2015 and 16/2015</p> <p>EDBCM Nos. 130/2008, 77/2019, 15/2020 and 40/2020</p> <p><u>Long Service Payment</u> “Guidelines for Processing Severance Payment and Long Service Payment”</p> <p><u>Employees' Compensation (salary portion)</u> “Staff Injured on Duty”</p> <p><u>Mandatory Provident Fund Scheme (MPF)</u> EDBC No. 48/2000</p>	<p><u>Miscellaneous Income</u></p> <p>It includes employees' compensation (salary portion) and / or reimbursement of long service payment credited to this account. In reporting the employees' compensation received, please disclose in the Notes to the Financial Statements (Statement 18) :</p> <ul style="list-style-type: none"> – the period of sick leave; – the amount of compensation as determined by the Commissioner for Labour in his Certificate of Compensation Assessment; – the amount of compensation received from the insurance company; and – the accounting entries for the compensation received. <p><u>Provident Fund</u></p> <p>A teacher who contributes to the Grant Schools Provident Fund or to the Subsidised Schools Provident Fund is subject to the provisions of the Grant Schools Provident Fund Rules or the Subsidised Schools Provident Fund Rules made under the Education Ordinance. (S.64 of the Code of Aid for Secondary School, S.68 of Vol.I and S.70 of Vol.II of the Code of Aid for Special Schools)</p>

Ref. No.	Grant/Account Name (Statement No.)	Relevant EDB document	Points for special attention and year-end surplus treatment
			<p><u>Supply Staff Account</u></p> <p>(a) Statement 4.1 and Statement 4.2 are used to record the receipt and payment of the salaries grant (including contribution to Mandatory Provident Fund Scheme) for supply teachers as well as substitute laboratory technicians. All expenditure accounted for during the year should be supported by receipts which are required to be forwarded to EDB for reimbursement at the earliest opportunity.</p> <p>(b) Any deficit in this account at the end of the accounting year should be represented by the total outstanding amount of payments as per receipts, which has not yet been reimbursed to school up to 31 August 2020.</p> <p>(c) Regular teachers will be granted paid study leave for attending courses stipulated in EDBC No. 12/2015 and supply teachers will be provided for the schools accordingly. Aided schools without an IMC will be provided with the supply teacher grant according to the established procedure. (Paragraph 15 of EDBC No. 12/2015 refers.)</p>
24	Committee on Home-School Co-operation Project (4.3)	EDBCM No. 97/2019 Letter to individual schools	<p>(a) Transfer of funds of the three types of grants to other ledger accounts is not allowed. Schools should reflect the income and expenditure of all PTA activities on the annual audited accounts of the school. Unspent amount of Type 1 grant can be retained by the PTA. Only Type 2 and Type 3 grants are subject to claw back. The unspent funds should be kept in the school account. Subsequent claw back of the unspent amount will be based on the annual audited accounts.</p> <p>(b) In case of deficit, schools may deploy the surplus under the General Domain of the OEBG to top up or school funds to absorb.</p>
25	Composite Furniture and Equipment Grant (CFEG) (4.3)	EDBCM No. 150/2019	<p>(a) The expenditure on Furniture and Equipment of this grant should be captured in the Balance Sheet (Statement 17) under both headings of “Fixed Assets for Furniture and Equipment” and “Transition Furniture and Equipment Grant / Composite Furniture and Equipment Grant and other Grants Utilized”.</p> <p>(b) Unspent funds can be accumulated up to five times the provision of the grant for the year in which the grant is provided. Any surplus exceeding this ceiling will be clawed back.</p>

Ref. No.	Grant/Account Name (Statement No.)	Relevant EDB document	Points for special attention and year-end surplus treatment
26	Substitute Teacher Grant (STG) (4.3)	EDBC No. 60/1999	<p>(c) Schools are allowed to use the surplus of the General Domain of the OEBG to cover the deficit of the CFEG.</p> <p>(d) Any deficit of the CFEG not covered by the surplus from the General Domain of the OEBG will have to be borne by the school funds.</p> <p>The combined surplus balance of STG, School and Class Grant and Administration Grant in excess of twelve months' provision will be clawed back.</p>
27	Recruitment of Native-speaking English Teacher (NET) (4.3)	EDBCM No. 45/2019	Recruitment subsidy is paid on reimbursement basis subject to a ceiling of \$8,000 per NET successfully recruited or \$4,000 per NET post for schools having conducted a recruitment exercise but are unable to recruit a suitable NET.
28	Grant Account for Fringe Benefits under the Enhanced Native-speaking English Teacher Scheme (4.3)	EDBC Nos. 9/2009 and 8/2013 EDBCM Nos. 122/2016 and 45/2019	The grant is released on application and reimbursement basis.
29	Top-up Fund for Procurement of Special Furniture and Equipment or Carrying Out Minor Conversion Works for Students with Disabilities in Ordinary Schools (4.3)	EDBC No. 8/2015 Letter to individual schools	<p>(a) Any unspent balance should be refunded to EDB by issuing crossed cheque payable to "The Government of the HKSAR". The cheque should be sent to the Special Education Support 4 Section of EDB.</p> <p>(b) All recurrent costs such as electricity charges and the subsequent maintenance fee(s) of the approved item(s), etc. shall be borne by the school.</p>
30	Special Recurrent Grant for Management of Shared Facilities at School Village (4.3)	Letter to individual schools	Subject to clawback mechanism applicable to individual schools.
31	Cash Grant for School-based After-school Learning and Support Programmes (4.3)	EDBCM No. 94/2019	<p>(a) The grant received by school for 2019/20 is subject to clawback if it has not fulfilled the requirements stipulated in the "Reply Form"</p> <p>(b) Schools may retain the unexpended amount not exceeding the total provision of the Grant for the current year. The excessive amount will be subject to clawback by EDB.</p> <p>(c) Any deficit will be met by school funds.</p>

Ref. No.	Grant/Account Name (Statement No.)	Relevant EDB document	Points for special attention and year-end surplus treatment
32	Lift Maintenance Grant (for mainstreamed schools) (4.3)	S.44 of Vol.II of the Code of Aid for Special Schools	Schools with lifts for use by pupils receive this grant to meet the recurrent cost of lift maintenance and servicing. The grant is paid to school on reimbursement basis.
33	Other Recurrent Grants (for reimbursement of government rent and rates) (4.3)	EDBC Nos. 14/2007 and 10/2016 EDBCM No. 5/2020	(a) PS(Ed) may approve full reimbursement of government rent and rates actually paid for school portion. (b) The tuckshop operator should be responsible for the rates and the government rent in respect of the tuckshop area. Schools should seek advice direct from the Rating and Valuation Department regarding the apportionment of rates and government rent for the tuckshop.
34	“Understanding Our Motherland” Programme (4.3)	EDBCM Nos. 90/2019 Letter to individual schools	(a) Programme 2019 must be conducted between 1 September 2019 and 31 August 2020. (b) Any unspent balance will be clawed back upon completion of the programme. (c) Any deficit will be met by school funds.
35	Enhanced Additional Funding – Support for NCS Students (Formerly known as Grant for School-based Support for Non-Chinese Speaking Students) (4.3)	EDBC No. 8/2014 Letter to individual schools	Schools are allowed to carry forward the surplus of the grant to a level of the current year’s provision. Any excess surplus based on the annual audited accounts will be clawed back.
36	Per Capita Grant (PCG) (4.3)	Letter to individual schools	(a) Any shortfall should be borne by school own funds or by sponsoring body of the school. Under exceptional circumstances, schools may use the surplus under the General Domain of OEBG to make up for the shortfall of PCG. The schools should ensure that doing so would not affect or compromise the interests of students in those classes receiving OEBG and prior approval from the respective Chief School Development officers of EDB is required. (b) Any unspent PCG cannot be transferred out to cover shortfall in other government grants. Schools cannot deploy funds across different cohort years. (c) If school ceases operation or change the financial type, such as turning to Direct Subsidy Scheme / private operation or merge with other school, the unspent provision should be clawed back upon such changes.

Ref. No.	Grant/Account Name (Statement No.)	Relevant EDB document	Points for special attention and year-end surplus treatment
37	Learning Support Grant for Secondary Schools (4.3)	EDBC Nos.12/2014 and 6/2019 Letter to individual schools	(a) Schools can only retain the surplus of not exceeding 30% of the total provision of the Grant for the current year. Any excessive amount will be subject to clawback by EDB. (Paragraph 29 of EDBC No. 6/2019 refers.) (b) Any deficit may be met by General Domain surplus of OEBG.
38	Diversity Learning Grant (DLG) (4.3) - Other Languages (OL) - Other Programmes (OP)	EDBCM Nos. 74/2017, 58/2018 and 82/2019	(a) Each category of DLG can be used to support the diverse learning needs of different cohorts of senior secondary (SS) students, rather than a particular cohort. (b) The surplus of each category can be carried forward to next school year but will be capped by the total provision of respective category of DLG disbursed in the current year (“capped amount”). (c) Any unspent balance of each category of DLG above the “capped amount” in the ledger accounts as at 31 August each year will be clawed back. (d) Any deficit for each category should be met by the surplus from the General Domain of OEBG / school funds.
39	Diversity Learning Grant (DLG) (4.3) - Applied Learning (ApL) Courses	EDBCM Nos. 147/2017 and 153/2018	<u>2018-20 cohort</u> (a) Any unspent balance of DLG as at 31 August 2020 will be clawed back. (b) Any deficit in the ledger account should be made up by schools’ deployment of other resources (CEG, Surplus in the General Domain of OEBG, STG, SSCSG, school funds) at the end of each school year. <u>2019-21 cohort</u> (c) Any unspent balance of DLG as at 31 August 2021 will be clawed back. (d) Any deficit in the ledger account should be made up by schools’ deployment of other resources (CEG, Surplus in the General Domain of OEBG, STG, SSCSG, school funds) at the end of each school year.

Ref. No.	Grant/Account Name (Statement No.)	Relevant EDB document	Points for special attention and year-end surplus treatment
40	Diversity Learning Grant (DLG) (4.3) - New Senior Secondary Adapted Applied Learning Courses for Students with Intellectual Disabilities	EDBCM Nos. 1/2018 and 4/2019 Letter to individual schools	<u>2018-20 cohort</u> (a) Any unspent balance as at 31 August 2020 will be clawed back. (b) Any deficit in the ledger account should be made up by schools' deployment of other resources (CEG, Surplus in the General Domain of OEBG, STG, SSCSG, school funds) at the end of each school year. <u>2019-21 cohort</u> (c) Any unspent balance as at 31 August 2021 will be clawed back. (d) Any deficit in the ledger account should be made up by schools' deployment of other resources (CEG, Surplus in the General Domain of OEBG, STG, SSCSG, school funds) at the end of each school year.
41	Fractional Post Cash Grant (FPCG) (4.3)	EDBCM No. 68/2019	(a) Surplus of the FPCG in excess of 12 months' provision of the school year in which the grant is provided will be clawed back. (b) Surplus of FPCG cannot be transferred to other accounts. (c) Schools may use the surplus of OEBG General Domain to top up FPCG. If there is still unsettled deficit, it should be topped up by school funds.
42	One off Set-up Grant for School-based Educational Psychology Service (SBEPS) (4.3)	EDBCM No.16/2019 SBEPS Guide Letters to individual schools	The base school shall utilize the grant for the purchase of (a) furniture; (b) test materials; (c) reference books; (d) educational programmes and packages; and (e) information technology equipment; and apply for reimbursement within the timeline. The grant should be completely utilized within 12 months in which the first EP is appointed to the given post.
43	Extra Senior Secondary Curriculum Support Grant (4.3)	EDBCM Nos. 43/2010 and 190/2010 Letter to individual schools	(a) The balance can be carried forward to next year until the end of the ninth school year from the commencement of class reduction; by then, any surplus will be clawed back. (b) Schools may deploy the General Domain of the OEBG to top up deficit of this grant immediately at the end of each school year if required.

Ref. No.	Grant/Account Name (Statement No.)	Relevant EDB document	Points for special attention and year-end surplus treatment
44	Intensive Support for Integrated Education in Ordinary Schools (4.3)	Letter to individual schools	<p>(a) The grant is one-off in nature for recruitment of Teaching Assistant(s) within the 2019/20 school year.</p> <p>(b) Payments related to the employers' contributions to MPF should be included in the grant.</p> <p>(c) The grant must be used within the 2019/20 school year. Any unspent balance will be clawed back at the end of 2019/20 school year.</p>
45	Senior Secondary Curriculum Support Grant (SSCSG) (4.3)	EDBC Nos. 9/2012 and 5/2019	<p>(a) Schools may deploy the surplus under the General Domain of the OEBG to top up the deficits.</p> <p>(b) Schools are allowed to retain surplus capped at the equivalent of the allocation of grant for that year.</p> <p>(c) From the 2019/20 to 2021/22 school year, schools may turn the existing SSCSG into regular teaching posts. If schools decide to turn the grant into regular teaching posts, they must convert the whole grant instead of a portion of the grant.</p> <p>(d) If there is unspent balance of SSCSG after the schools have opted to turn SSCSG into regular teaching posts in 2019/20 school year, schools can continue to deploy the balance until 31 August 2020. Any unspent balance as at 31 August 2020 will be clawed back.</p>
46	Moral and National Education Support Grant (4.3)	EDBCM No. 135/2012	<p>(a) The unspent balance could be carried forward to the next school year until the grant is used up.</p> <p>(b) If there is any deficit, schools may deploy the surplus of the General Domain of the OEBG or school funds to top up the differences at the end of the school year.</p>
47	Senior Secondary School Students Mainland Exchange Programme Subvention Scheme (4.3)	EDBCM No. 91/2019	<p>(a) Programme 2019 must be completed before 31 August 2020.</p> <p>(b) Any unspent balance will be clawed back upon completion of the programme.</p>
48	Student Grant for Applied Learning Chinese (ApL(C)) (4.3)	EDBCM Nos. 147/2017, 153/2018 and 174/2019	<p><u>2018-20 cohort</u></p> <p>(a) The surplus in the ledger account can be carried forward to the next school year until the end of the 2019/20 school year. Any unspent balance of the grant as at 31 August 2020 will be clawed back.</p>

Ref. No.	Grant/Account Name (Statement No.)	Relevant EDB document	Points for special attention and year-end surplus treatment
49	Career and Life Planning Grant (CLPG) (4.3)	EDBC Nos. 6/2014 and 5/2019	<p><u>2019-21 cohort</u></p> <p>(b) The surplus in the ledger account can be carried forward to the next school year until the end of the 2020/21 school year. Any unspent balance of the grant as at 31 August 2021 will be clawed back.</p> <p><u>2020-22 cohort</u></p> <p>(c) The surplus in the ledger account can be carried forward to the next school year until the end of the 2021/22 school year. Any unspent balance of the grant as at 31 August 2022 will be clawed back.</p> <p>(a) Schools are allowed to retain the unspent balance of the grant up to 20% of the total provision disbursed for each year. Any amount in excess of the said ceiling based on school's annual audited accounts will be clawed back. Transfer of funds out of this cash grant is not allowed.</p> <p>(b) If a deficit is incurred in any year, schools may deploy the surplus under the General Domain of OEBG to top up the deficit. Any remaining deficit balance not covered in that year should be met by school funds.</p> <p>(c) From the 2019/20 to 2021/22 school year, schools may turn the existing CLPG into regular teaching posts. If schools decide to turn the grant into regular teaching posts, they must convert the whole grant instead of a portion of the grant.</p> <p>(d) If there is unspent balance of CLPG after the schools have opted to turn CLPG into regular teaching posts in 2019/20 school year, schools can continue to deploy the balance until 31 August 2020. Any unspent balance as at 31 August 2020 will be clawed back.</p>
50	Grant for After-School Support for Non-Chinese Speaking Students (4.3)	EDBC No. 8/2014 Letter to individual schools	Schools are allowed to carry forward the surplus of the grant to a level of the current year's provision. Any excess surplus based on the annual audited accounts will be clawed back.

Ref. No.	Grant/Account Name (Statement No.)	Relevant EDB document	Points for special attention and year-end surplus treatment
51	One-off Grant under ITE4 (4.3)	Letter to individual schools	<p><u>For grant disbursed in 2017</u></p> <p>(a) Any unspent balance of the grant has to be clawed back according to the annual audited accounts as at 31 August 2020. Transfer of funds out of this grant is not allowed.</p> <p>(b) Schools may deploy the surplus under the General Domain of OEBG to cover the deficit of this one-off grant.</p> <p><u>For grant disbursed in 2018</u></p> <p>(c) Any unspent balance of the grant has to be clawed back according to the annual audited accounts as at 31 August 2021. Transfer of funds out of this grant is not allowed.</p> <p>(d) Schools may deploy the surplus under the General Domain of OEBG to cover the deficit of this one-off grant.</p> <p><u>For grant disbursed in 2019</u></p> <p>(e) Any unspent balance of the grant has to be clawed back according to the annual audited accounts as at 31 August 2022. Transfer of funds out of this grant is not allowed.</p> <p>(f) Schools may deploy the surplus under the General Domain of OEBG to cover the deficit of this one-off grant.</p>
52	Extra Recurrent Grant under ITE4 (4.3)	Letter to individual schools	<p>(a) Any unspent balance as at 31 August 2020 based on school's annual audited accounts will be clawed back. Transfer of funds out of this grant is not allowed.</p> <p>(b) Schools may deploy the surplus under the General Domain of OEBG to cover the deficit of this grant.</p>
53	Hong Kong School Drama Festival (4.3)	EDBCM No. 163/2019	The unspent balance can be carried forward to the next school year until the grant is used up.

Ref. No.	Grant/Account Name (Statement No.)	Relevant EDB document	Points for special attention and year-end surplus treatment
54	One-off Information Technology Grant for e-Learning in Schools (4.3)	EDBCM Nos. 185/2016 and 210/2017 Letter to individual schools	<p><u>For grant disbursed in 2017/18</u></p> <p>(a) Any unspent balance of the grant as at 31 August 2020 will be clawed back based on schools' annual audited accounts.</p> <p>(b) In case of deficit, schools may deploy the surplus under General Domain of OEBG to cover the deficit.</p> <p><u>For grant disbursed in 2018/19</u></p> <p>(c) Any unspent balance of the grant as at 31 August 2021 will be clawed back based on schools' annual audited accounts.</p> <p>(d) In case of deficit, schools may deploy the surplus under General Domain of OEBG to cover the deficit.</p> <p><u>For grant disbursed in 2019/20</u></p> <p>(e) Any unspent balance of the grant as at 31 August 2022 will be clawed back based on schools' annual audited accounts.</p> <p>(f) In case of deficit, schools may deploy the surplus under General Domain of OEBG to cover the deficit.</p>
55	One-off Grant for the Promotion of Chinese History and Culture (4.3)	EDBCM Nos. 119/2017 and 44/2020	<p>(a) Any unspent balance of the grant as at 31 August 2021 will be clawed back based on schools' annual audited accounts.</p> <p>(b) If deficit is incurred on the grant in any year, schools may deploy the surplus under the General Domain of OEBG to cover the deficit. If there is still unsettled deficit, it should be topped up by school funds.</p>
56	Subsidy for Opening up School Facilities for Promotion of Sports Development Scheme (4.3)	EDBCM No. 103/2019	<p>(a) Unspent balance of the subsidy as at 31 August each year will be clawed back based on schools' annual audited accounts. Transfer of funds out of this subsidy is not allowed.</p> <p>(b) Any deficit should not be charged to government funds.</p>

Ref. No.	Grant/Account Name (Statement No.)	Relevant EDB document	Points for special attention and year-end surplus treatment
57	Information Technology Staffing Support Grant (4.3)	EDBC No. 11/2017	<p>(a) Schools are allowed to retain the surplus balance up to 12 months' provision of this grant and carry it forward for use in the next school year. Any amount in excess of the said ceiling will be clawed back based on schools' annual audited accounts. Transfer of funds out of this grant is not allowed.</p> <p>(b) If a deficit is incurred on the grant in any year, schools may deploy the surplus under the General Domain of OEBG to top up the deficit of the grant. Any remaining deficit balance not covered in that year should be met by school funds.</p>
58	Supply Teacher for Paid Non-local Study Leave Scheme (4.3)	EDBCM No. 190/2019 Letter to individual schools	Participating teachers will be granted full-pay study leave for attending the courses stipulated in EDBCM No. 190/2019. Funding for employment of supply teachers covering participants' whole study leave period will be provided for their schools. (Paragraph 5 of EDBCM No. 190/2019 refer)
59	Grant for the Sister School Scheme (4.3)	EDBC No. 9/2018	<p>(a) Schools are allowed to retain a maximum amount of unspent balance of up to 12 months' provision of the grant. Any amount in excess of the said ceiling will be clawed back based on schools' annual audited accounts. Transfer of funds / unspent balance out of this grant is not allowed.</p> <p>(b) If found inadequate, schools may use the grant in tandem with other government funding, including the surplus under the OEBG. If there is still unsettled deficit, it should be met by school funds.</p>
60	Promotion of Reading Grant (4.3)	EDB No. 10/2018 EDBCM No. 181/2019	<p>(a) Schools are allowed to retain an amount of unspent balance up to 12 months' provision of the grant. Any amount in excess of the said ceiling will be clawed back based on schools' annual audited accounts. Transfer of funds / unspent balance out of this grant is not allowed.</p> <p>(b) If found inadequate, the grant can be topped up by the schools with the use of other government funding, including the surplus under the General Domain of OEBG. If there is still unsettled deficit, it has to be met by school funds.</p>
61	Additional Substitute Staff Grant (4.3)	EDBC No. 16/2018	This grant is released on application and reimbursement basis.

Ref. No.	Grant/Account Name (Statement No.)	Relevant EDB document	Points for special attention and year-end surplus treatment
62	Provision of a Non-recurrent Grant to Secondary Schools to Support Non-Chinese Speaking Students to Learn Chinese History and Culture (4.3)	EDBCM No. 86/2019 and 44/2020	<p>(a) Any unspent balance of the grant as at 31 August 2021 will be clawed back based on the schools' annual audited accounts.</p> <p>(b) If a deficit is incurred on the grant, schools may deploy the surplus under the General Domain of OEBG to cover the deficit of the grant. If there is still unsettled deficit, it should be topped up by school funds.</p>
63	Life-wide Learning Grant (4.3)	EDBC No. 16/2019	<p>(a) Schools are allowed to retain an amount of unspent balance up to 12 months' provision of the grant. Any amount in excess of the said ceiling will be clawed back based on schools' annual audited accounts. Transfer of funds / unspent balance out of this grant is not allowed.</p> <p>(b) In case of deficit, schools can top up the grant by deploying the surplus under the General Domain of OEBG. If there is still unsettled deficit, it has to be met by the schools' own funds.</p>
64	School Executive Officer Grant (4.3)	EDBCM No. 37/2019	<p>(a) Schools are allowed to retain an unspent balance up to 12 months' provision of the grant. With reference to the annual audited accounts, schools should return any excess surplus to EDB. Transfer of funds and / or its unspent balance to other accounts out of this cash grant is not allowed.</p> <p>(b) If the grant has a deficit in a certain year, schools may deploy the surplus under the General Domain of OEBG to cover the deficit. Any remaining deficit should then be covered by the schools' own funds.</p>
65	Grant for Supporting Non-Chinese Speaking Students with Special Educational Needs (4.3)	EDBC No. 9/2019 Letter to individual schools	<p>(a) Schools may retain an unspent balance up to 12 months' provision of the grant. Any surplus balance in excess of the capped amount should be clawed back by the EDB.</p> <p>(b) If a deficit is incurred, the grant can be topped up by the schools with the use of other government funding, including surplus under the OEBG. If there remains a deficit after topping up, it should be made up by the schools' own fund / non-government funds.</p>

Ref. No.	Grant/Account Name (Statement No.)	Relevant EDB document	Points for special attention and year-end surplus treatment
66	One-off School-based Speech Therapy (SBST) Set-up Grant (4.3)	EDBC No. 13/2019 Guide on SBST Services	<p>(a) The grant should be utilized within the first school year / financial year of disbursement. With justifiable reasons, the unspent balance could be carried forward to the next year until the grant is used up. Transfer of funds / unspent balance out of this grant is not allowed.</p> <p>(b) In case of deficit, schools can top up the grant by deploying the surplus under the General Domain of OEBG. If there is still unsettled deficit, it has to be met by the schools' own funds / non-government funds.</p>
67	Special Anti-epidemic Grant (4.3)	EDBCM No. 37/2020	<p>(a) Any unspent balance as at 31 August 2021 should be returned to the Government. The grant and its surplus, if any, should not be transferred to any other accounts.</p> <p>(b) Deficit should be borne by the surplus of OEBG. If deficit is still found, it should be borne by the schools' own fund / non-government fund.</p>
68	2020 HKDSE Cross-boundary Candidates Compassionate Grant (Study Camp) (4.3)		The grant was provided for HKDSE cross-boundary candidates' stay in a study camp in North District after the 14-day quarantine period. Any unspent balance should be refunded to EDB, based on the report submitted to the Assessment and HKEAA section.
69	2020 HKDSE Cross-boundary Candidates Compassionate Grant (Others) (4.3)		The grant was provided to HKDSE cross-boundary candidates without dwelling place in Hong Kong and whose examination centres are outside of North District via school concerned on application basis.
70	Relief Grant for Collegial Participation in External School Review (4.3)	Letter to individual schools	<p>(a) Schools are allowed to retain the balance of the disbursed grant up to the end of the next school / financial year. Any unspent balance of the disbursed grant after the closed of the next school / financial year will be clawed back by the EDB based on the annual audited accounts.</p> <p>(b) Transfer of funds / unspent balance out of the grant is not allowed.</p>
71	Summer Reading Programme – “Gift Book Pilot Scheme (2020)” (4.3)	EDBCM No. 82/2020	<p>(a) Schools are required to use the one-off grant for the purchase of books for students on or before 30 September 2020.</p> <p>(b) The surplus of the one-off grant will be returned to the EDB on reimbursement on an actual expense basis. The EDB will claw back the unspent balance by 30 November 2020.</p>

Ref. No.	Grant/Account Name (Statement No.)	Relevant EDB document	Points for special attention and year-end surplus treatment
72	One-off Special Support Grant (4.3)	Letter to individual schools	<p>(c) If a deficit is incurred on the one-off grant, schools may deploy the surplus under the General Domain of the OEBG. If there is still unsettled deficit, it has to be met by the schools' own funds / non-government fund.</p> <p>(a) Any unspent balance as at 31 August 2021 will be clawed back by the EDB based on the annual audited accounts.</p> <p>(b) Transfer of funds / unspent balance out of the grant is not allowed.</p> <p>(c) If deficit is incurred on the one-off grant, schools may deploy the surplus under the General Domain of the OEBG. If there is still unsettled deficit, it has to be met by the schools' own funds / non-government fund.</p>
73	One-off Partial Subsidy to S3 to S5 Cross-boundary Students (CBS) for the Additional School Bus Fare (4.3)	Letter to individual schools	Any unspent balance as at 31 October 2020 should be returned to the EDB.
74	Others (4.3)		Please provide the details for grants not mentioned in this circular memorandum under separate column.
75	<p>Community Care Fund Assistance Programmes Account (4.4)</p> <p>- Provision of Subsidy to Needy Primary and Secondary Students for Purchasing Mobile Computer Devices to Facilitate the Practice of e-Learning</p>	<p>EDBCM No. 65/2019</p> <p>Letter to individual schools</p>	<p>(a) Any surplus at the end of the school year should be refunded to Community Care Fund via EDB based on the financial report submitted to the Information Technology in Education Section.</p> <p>(b) In case of deficit as a result of the unit cost of the device being higher than the maximum level of subsidy, schools should use school funds to cover the deficit.</p>
76	Student Activities Support Grant (4.5)	EDBC No. 17/2019	<p>(a) Any surplus at the end of the school year should be refunded to the EDB/ Student Activities Support Fund based on the annual audited accounts.</p> <p>(b) Any deficit incurred should be met by the school's own funds.</p>
77	Gratuity Reserve (5)		This account is for payment of retirement or death gratuities to administrative and janitor staff

Ref. No.	Grant/Account Name (Statement No.)	Relevant EDB document	Points for special attention and year-end surplus treatment
			employed prior to 1 September 1977.
78	Mortgage Interest Subsidy Scheme (6)	Terms and Conditions of Mortgage Interest Subsidy Scheme (July 2007)	
79	Other Charges : Income and Expenditure (7)		This account is only applicable to schools which were converted from Caput Schools into Aided Secondary Schools under phased conversion. Prior approval of PS(Ed) should be obtained for all expenditure items exceeding \$8,000 charged to this account.
80	Per Caput Grant (I) (7)		This account is only applicable to schools which were converted from Caput Schools (in existence prior to 1.9.1976) into Aided Secondary Schools. Prior approval of PS(Ed) should be obtained for all expenditure items charged to this account.
81	Non-recurrent and Capital Grants for Building and Furniture and Equipment (8)	S.39 to 41 of the Code of Aid for Secondary Schools EDBC No. 4/2013	<p>(a) The expenditure of this account should be captured in the Balance Sheet (Statement 17) –</p> <p><u>Building</u></p> <ul style="list-style-type: none"> - Under both headings of “Fixed Assets for Building” and “Non-recurrent and Capital Grants for Building” if funded by the government grants; and “Fixed Assets for Building” and “Accumulated Fund” if appropriated from school funds. <p><u>Furniture and Equipment</u></p> <ul style="list-style-type: none"> - Under both headings of “Fixed Assets for Furniture and Equipment” and “Non-recurrent and Capital Grants for Furniture and Equipment” if funded by the government grants; and “Fixed Assets for Furniture and Equipment” and “Accumulated Fund” if appropriated from school funds. <p>(b) Where the award of the approved tender / quotation would result in the approved estimate being exceeded, the school should meet the difference between the cumulative expenditure and the approved estimate.</p> <p>(c) Non-recurrent and Capital Grants for Furniture and Equipment are provided for furniture and equipment requirements not covered by the Composite Furniture and Equipment Grant.</p>

Ref. No.	Grant/Account Name (Statement No.)	Relevant EDB document	Points for special attention and year-end surplus treatment
			<p>(d) When there is any subsequent reduction in tender price (e.g. through offer of discount for prompt payment) or the approved tender is for any reason cancelled, the school should inform the Bureau (Attn. Capital and Kindergarten Subventions Section) immediately in writing of the appropriate amount of subsidy to be refunded. Capital and Kindergarten Subventions Section will then offset the amount from other subsidies payable to the school.</p>
82	<p>Employer's Contributions to PF / MPF Scheme for Non-teaching Staff - School Section (9) - Boarding Section (10)</p>	<p>S.65 of the Code of Aid for Secondary Schools</p> <p>S.69 of Vol.I and S.71 of Vol.II of the Code of Aid for Special Schools</p> <p>EDBC Nos. 48/2000, 6/2010 and 10/2015</p> <p>The booklet "Staff Retirement Schemes in Subvented Organizations"</p>	<p>(a) Subsidy will be provided for Provident Fund (PF) / Mandatory Provident Fund (MPF) contributions in respect of clerical and janitor staff employed with the provision allocated by EDB for Administration Grant / Revised Administration Grant. For staff employed with funds under other constituent grants of the OEBG, schools should meet the PF / MPF contributions with the respective grants or surplus funds under the OEBG or their own funds. (Paragraph 3.6 of OEBG User Guide)</p> <p>(b) The payment arrangements of subsidy covering employer's PF / MPF contributions for non-teaching staff with remunerations funded under Salaries Grant are set out in EDDB No. 10/2015.</p> <p>(c) With effect from 2010/11 school year, the payment arrangement for subsidy for employer's PF / MPF contributions for staff employed under Administration Grant / Revised Administration Grant is streamlined in order to save administrative efforts in aided schools. The revised payment and accounting arrangements stated in paragraph 4 of EDDB No.6/2010 are listed as follows:</p> <p>(i) Schools should submit the claim form for the provisional annual employer's PF / MPF contributions for the coming school year in respect of staff employed under Administration Grant / Revised Administration Grant to the Recurrent Subventions Section of this Bureau before 15 August each year;</p>

Ref. No.	Grant/Account Name (Statement No.)	Relevant EDB document	Points for special attention and year-end surplus treatment
			<p>(ii) In completing the claim form in (i) above, schools should provide their latest estimate of the employer's PF / MPF contributions for the coming school year to the best of their knowledge and certify that the information provided are correct and complied with relevant circulars. Supporting documents to substantiate the payments of salaries and PF / MPF contributions should be kept at schools;</p> <p>(iii) Based on the provisional claim at (i) above, schools will receive the subsidy for employer's PF / MPF contributions at the same time when Administration Grant / Revised Administration Grant is paid to schools;</p> <p>(iv) Schools should continue to include a schedule detailing the staff employed by Administration Grant / Revised Administration Grant and their related PF / MPF contributions in their annual audited accounts;</p> <p>(v) Any excess subsidy paid will be clawed back from schools while any shortfall will be reimbursed to schools after the examination of annual audited accounts.</p>
83	Subscriptions : Income and Expenditure (11)	EDBC Nos. 14/2003, 14/2012 and 10/2016 S.14 of the Code of Aid for Secondary Schools	<p>(a) Donations and income received from sources other than EDB (e.g. hire of school accommodation, bank interest derived from school funds etc.) should be included in this account unless otherwise required.</p> <p>(b) Appropriations made in the account including school's share of the capital expenditure should be explained in the Statement of Notes to the Financial Statements.</p> <p>(c) Auditors should note that schools may not transfer any income arising from the Subscriptions Account to any other body, or to a fund separately kept by the sponsoring body, unless such transfer has been approved in writing by PS(Ed).</p> <p>(d) Auditors should check that the trading operations are carried out in accordance with the approval letter of PS(Ed) and that any profits derived are credited to the Subscriptions Account.</p>

Ref. No.	Grant/Account Name (Statement No.)	Relevant EDB document	Points for special attention and year-end surplus treatment
84	Sale of Textbooks (12)	EDBC No. 10/2016 EDBCM No. 26/2020	<p>(a) Profit generated from sale of textbooks should not be allowed.</p> <p>(b) Proper books of accounts, which reflect all sales and purchases of textbooks, must be kept.</p> <p>(c) Schools are not allowed to accept or solicit from textbook publishers complimentary learning and teaching materials.</p> <p>(d) Schools are not allowed to accept any donations, or any form of benefits from textbook publishers or textbook retailers.</p>
85	Approved Collection for Specific Purposes (13)	EDBC No. 14/2012	<p>(a) In respect of charges for non-standard items, schools should keep a separate ledger account to record all income and expenditure.</p> <p>(b) In case of acquiring assets by the collection, all subsequent costs such as installation, electricity, maintenance and replacement will be paid out of the collection.</p>
86	Set-up Fund (14)	EDBC No. 4/2013 Letter to individual schools	<p>(a) Government subsidy for Set-up Fund should be included in this account.</p> <p>(b) When using the Set-up Fund to purchase furniture and equipment, the school should follow the procedures and the guidelines set out in EDBC No. 4/2013.</p> <p>(c) The school should report the income and expenditure of the Set-up Fund in the school's annual audited accounts.</p> <p>(d) When there is a closing surplus in the Set-up Fund account -</p> <ul style="list-style-type: none"> - the school should return any surplus fund to EDB (for schools with full government subsidy) - the school should transfer the surplus to the school's Furniture & Equipment Account or any school funds accounts if the school has been equipped to the required standards in accordance with the reference list of furniture and equipment (F&E List) (for schools with full sponsor contribution) - the school should credit the surplus to the school's Furniture & Equipment Account if the school has been equipped to the required standards but it has decided to deviate from the F&E List in some subjects/areas. If the standard items not yet purchased are

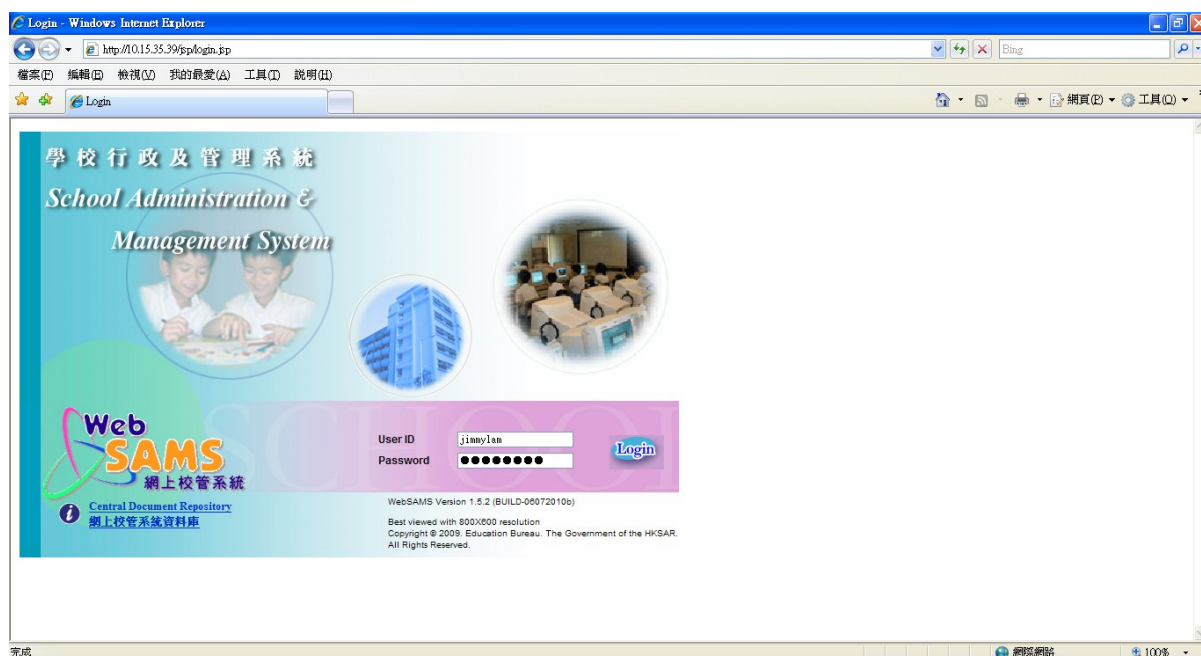
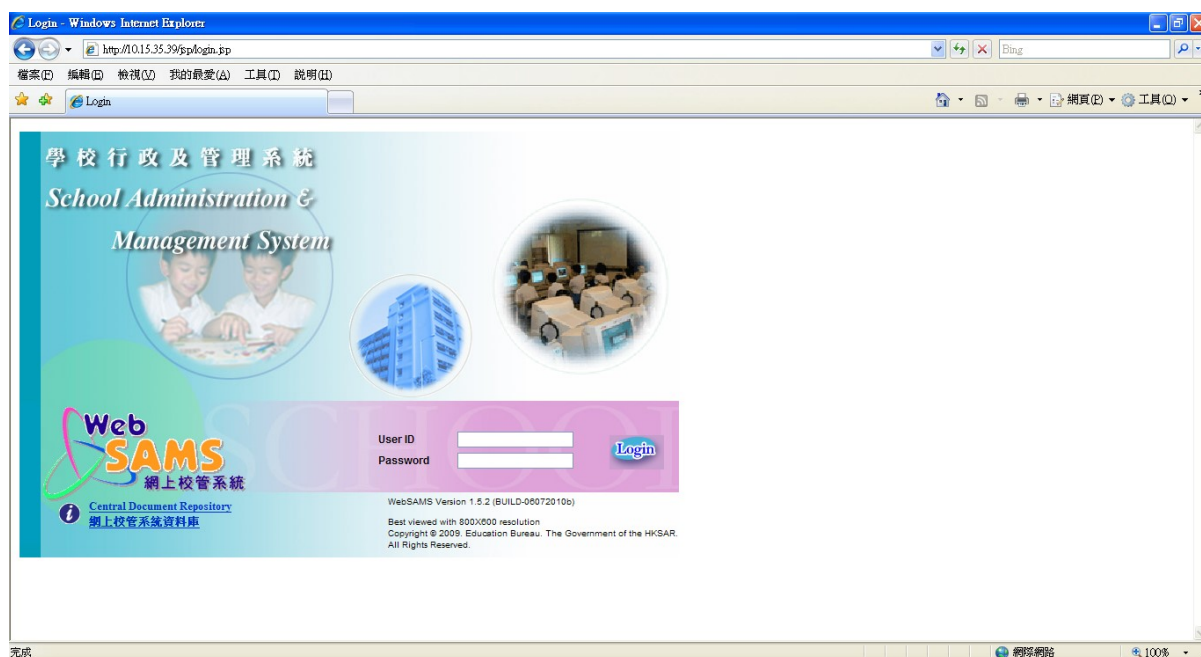
Ref. No.	Grant/Account Name (Statement No.)	Relevant EDB document	Points for special attention and year-end surplus treatment
			acquired in future, the relevant expenditure should be charged to this F&E Account (for schools with full sponsor contribution)
87	School's Furniture and Equipment (15)	Letter to individual schools	Upon the closure of the Set-up Fund, an amount of unspent balance should be transferred to this account according to REO's direction / approval (for schools with sponsor contribution).
88	Accumulated Fund (16)		This account records the school's share of the cost of capitalized fixed assets since its commencement of operation.
89	Balance Sheet (17)		
90	Non-recurrent and Capital Grants for - Building Utilized - Furniture and Equipment Utilized	S.39 to 41 of the Code of Aid for Secondary Schools	These accounts should record the accumulated capital subsidies under Non-recurrent and Capital Grants for Building and Furniture and Equipment since school's commencement of operation. The grants utilized should not be deducted from the costs or the book values of the assets concerned.
91	Furniture and Equipment Grants Utilized		This account should record the accumulated capital subsidies by way of the Furniture and Equipment Grant element under the Block Grant Account since school's participation in the School Management Initiative Scheme. The grants utilized should not be deducted from the costs or the book values of the assets concerned.
92	Transition Furniture and Equipment Grant/Composite Furniture and Equipment Grant and Other Grants Utilized		This account should record the accumulated capital subsidies under the Transition Furniture and Equipment Grant / Composite Furniture and Equipment Grant and other grants. The grants utilized should not be deducted from the costs or the book values of the assets concerned.
93	Reserves and Funds		Where reserve and funds (liquid funds) are invested or held separately, the assets to which they relate should be shown separately.
94	Surplus Retained		The net total surplus of all government grants should be represented by cash (at bank and in hand) and / or other current assets for government funds. To facilitate audit purpose, a fund reconciliation should be provided in Statement 18.

Ref. No.	Grant/Account Name (Statement No.)	Relevant EDB document	Points for special attention and year-end surplus treatment
95	Long Term Liabilities		The nature and the total amount of the loan originally contracted must be disclosed in Statement 18 together with the terms of repayment including the amount of monthly repayment, the total number of repayments and the total amount repaid to date with the approval from REO.
96	Current Liabilities		Breakdown of Sundry Creditors and OEBG / Grants received in advance for the 2020/21 school year and details of other current liabilities together with the amount owing must be stated in Statement 18.
97	Contingent Liability	S.11 of the Code of Aid for Secondary Schools	<p>Should the school cease to be an approved aided school, it should state by way of note that there is a contingent liability in respect of building (including major repairs) and furniture and equipment grants, and all recurrent and non-recurrent grants received by the school, which may become repayable wholly or in part.</p> <p>Where the likelihood of ceasing to be an aided school is remote, disclosure of this contingent liability is not required.</p>
98	Fixed Assets	S.67 of the Code of Aid for Secondary School	<p>(a) Provision for depreciation in respect of buildings, major repairs, furniture and equipment etc. by school is not required.</p> <p>(b) As regards educational television sets supplied by this Bureau, the full cost of the television set should be shown in the Fixed Assets Account. The trade-in value for the old ETV should be reflected in the School and Class Grant Account as Miscellaneous Income.</p> <p>(c) As regards microcomputers, fax machines and photocopiers supplied by this Bureau, the full cost should be shown in the Fixed Asset Account.</p> <p>(d) The total value of Fixed Assets should be represented by the total of Accumulated Fund (School's share of capitalized funds), Non-recurrent and Capital Grants for Building and Furniture and Equipment (Government's share of capitalized funds), Furniture and Equipment Grant Utilized (Government's share of capitalized funds) and Transition Furniture and Equipment Grant / Composite Furniture and Equipment Grant and Other Grants Utilized (Government's share of capitalized funds) plus Long-term Liabilities (if applicable).</p>

Ref. No.	Grant/Account Name (Statement No.)	Relevant EDB document	Points for special attention and year-end surplus treatment		
99	Current Assets	EDBC No. 14/2015	<p>(a) Separate bank accounts should be opened for the government funds and school funds.</p> <p>(b) Any surplus funds which are not immediately required may be kept in a savings account or on fixed deposit with a bank licensed under the Banking Ordinance.</p> <p>(c) Any interest derived should be apportioned equitably between the accounts concerned if both government funds and school funds are involved.</p> <p>(d) Breakdown of the sundry debtors and other current assets together with the amount due to school must be shown in Statement 18.</p>		
100	Notes to the Financial Statements (18)		<p>This statement is for explanatory notes to the financial statements or supplementary information that the school may consider necessary or desirable to provide in detail. These notes will be considered as an integral part of the accounts.</p> <p>For school finance matters, please refer to Chapter 6, School Finance Matters of the School Administrations Guide.</p> <p>While deploying the constituent grants under the OEBG to employ staff, schools should set aside part of these grants for the payment of Severance Payment/Long Service Payment as outstanding commitment. In case these grants are insufficient to settle the payment, schools may deploy surplus in the General Domain of the OEBG to cover the deficit. Schools should keep a separate ledger for the Severance Payment/Long Service Payment and work out the amount payable to each staff concerned on their cessation of service. (Paragraph 3.7 and Appendix B of the OEBG User Guide and EDBCM No. 150/2019 refer.) Schools should provide such details in the Notes.</p>		
<u>List of Abbreviations</u>					
<table style="width: 100%; border: none;"> <tr> <td style="width: 30%; vertical-align: top;"> EDB EDBC EDBCM MPF NET OEBG PF PS(Ed) REO </td> <td style="width: 70%; vertical-align: top;"> Education Bureau Education Bureau Circular Education Bureau Circular Memorandum Mandatory Provident Fund Native-speaking English Teacher Operating Expenses Block Grant Provident Fund Permanent Secretary for Education Regional Education Office </td> </tr> </table>				EDB EDBC EDBCM MPF NET OEBG PF PS(Ed) REO	Education Bureau Education Bureau Circular Education Bureau Circular Memorandum Mandatory Provident Fund Native-speaking English Teacher Operating Expenses Block Grant Provident Fund Permanent Secretary for Education Regional Education Office
EDB EDBC EDBCM MPF NET OEBG PF PS(Ed) REO	Education Bureau Education Bureau Circular Education Bureau Circular Memorandum Mandatory Provident Fund Native-speaking English Teacher Operating Expenses Block Grant Provident Fund Permanent Secretary for Education Regional Education Office				

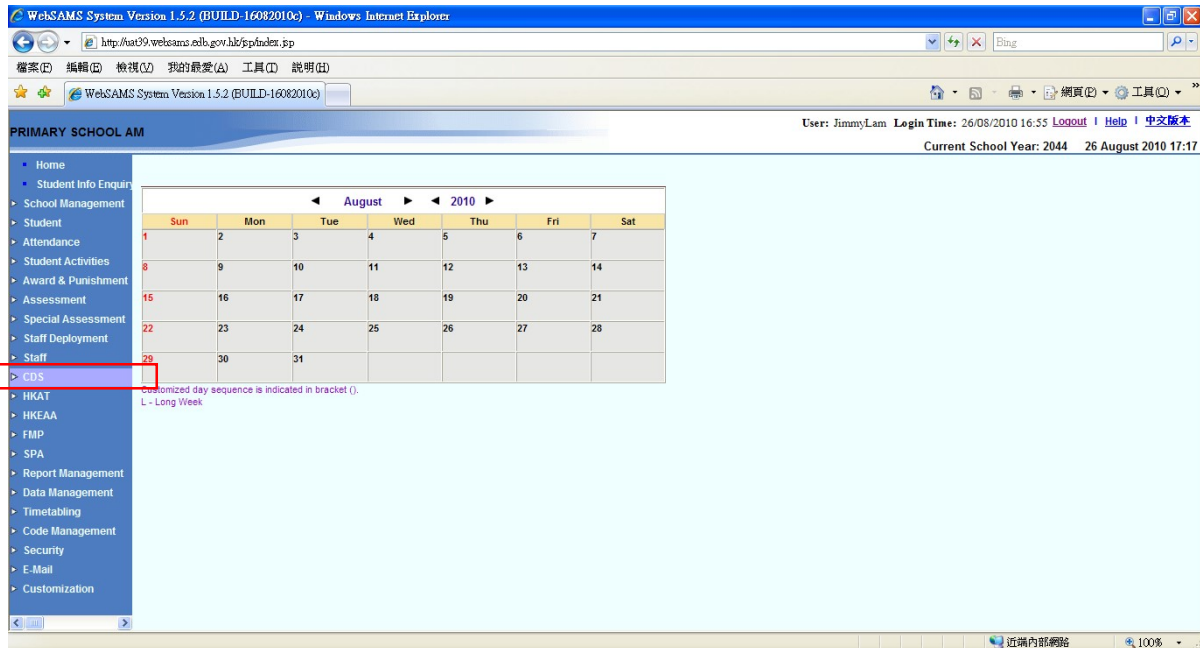
Procedures for Submitting Softcopy of Annual Audited Accounts Through Communication and Delivery System

(1) Login to the School Administration and Management System (WebSAMS)

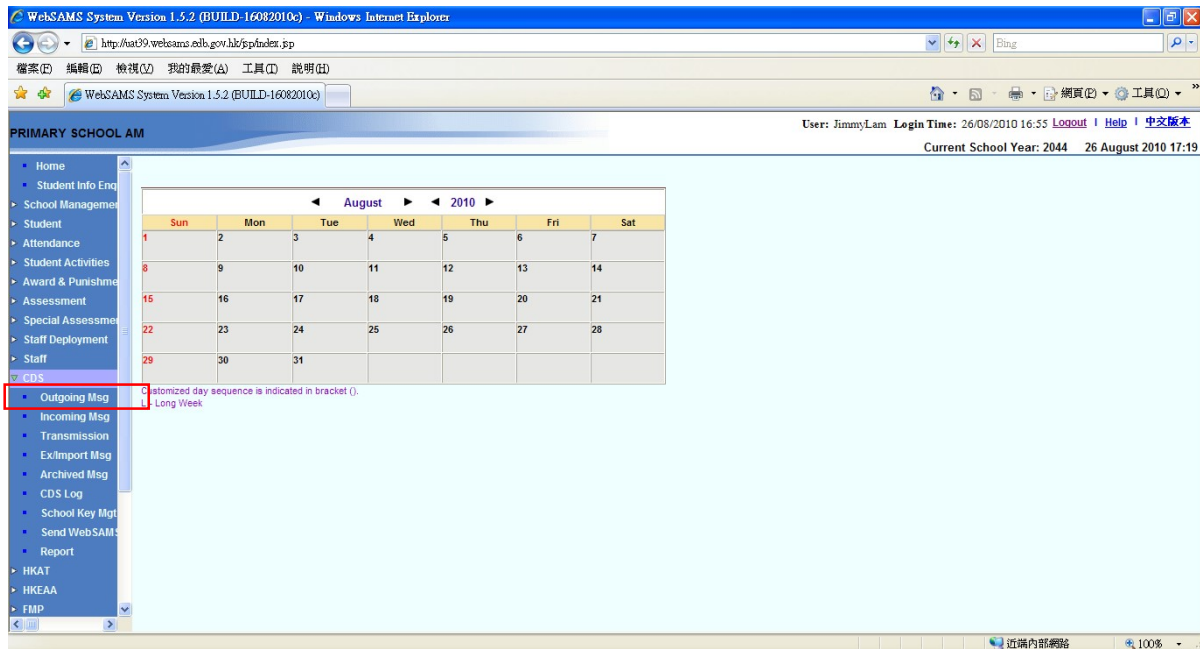


Procedures for Submitting Softcopy of Annual Audited Accounts Through Communication and Delivery System

(2) Select the Communication and Delivery System (CDS) (聯遞系統) Module

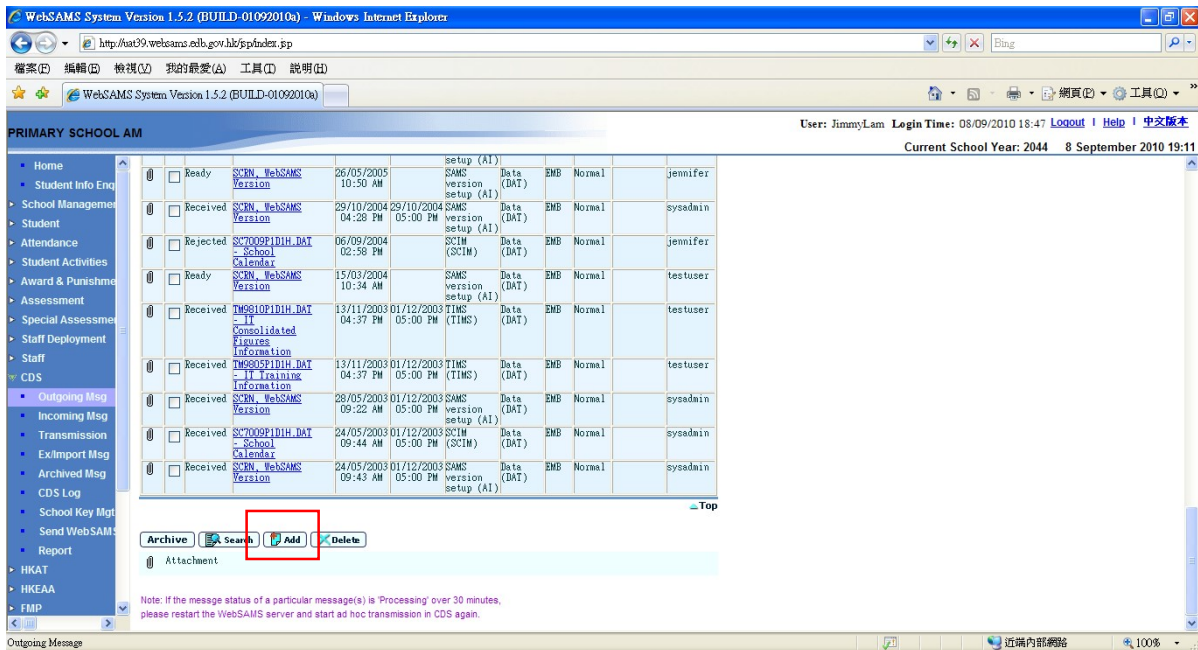


(3) Select “**Outgoing Msg**” (“寄發訊息”) from the drop down list.

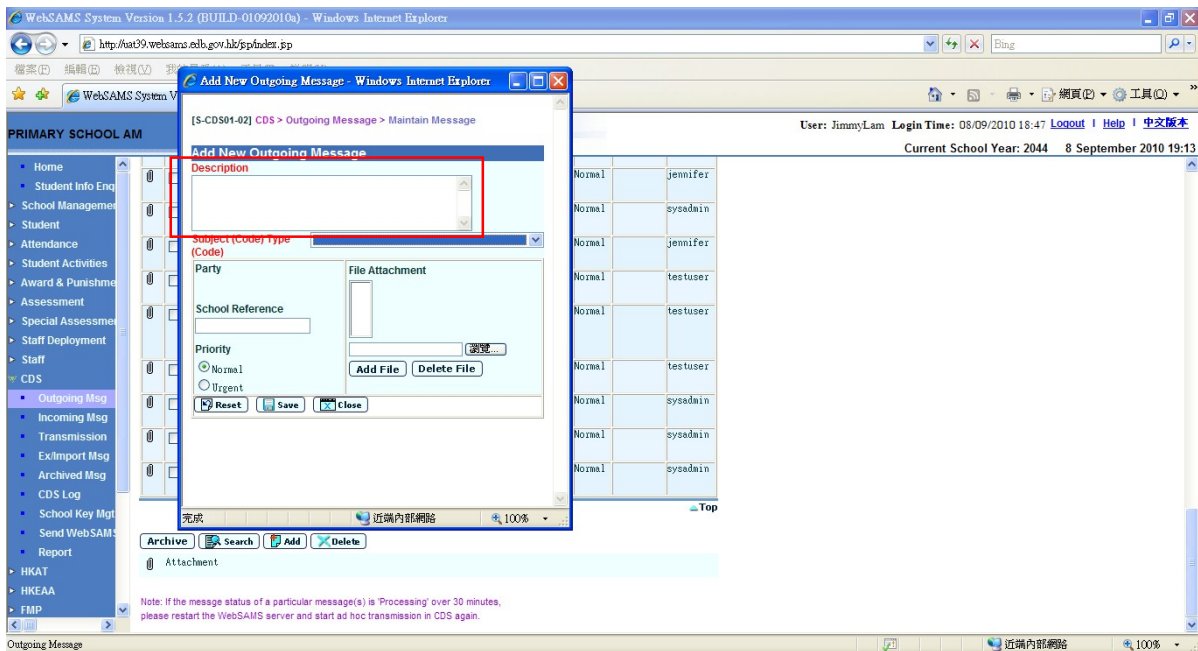


Procedures for Submitting Softcopy of Annual Audited Accounts Through Communication and Delivery System

(4) Scroll to the bottom and click the “Add” (“增新”) button.

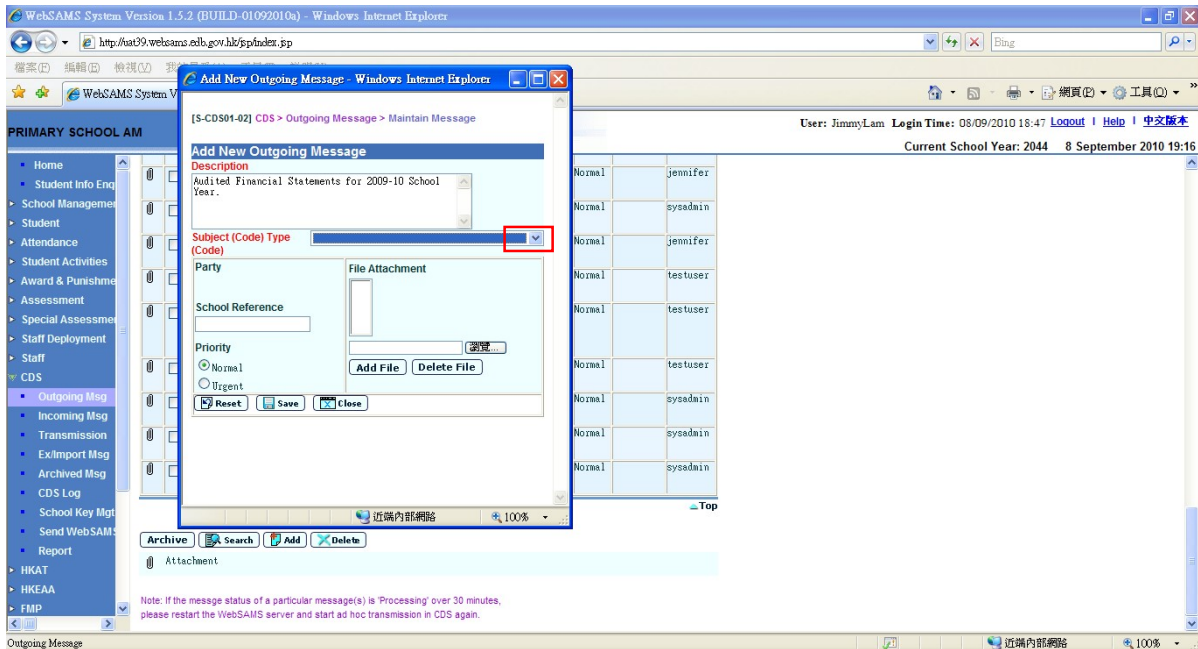


(5) Enter the appropriate “Description” (“說明”) (for identification at a later stage) on the pop-up screen.

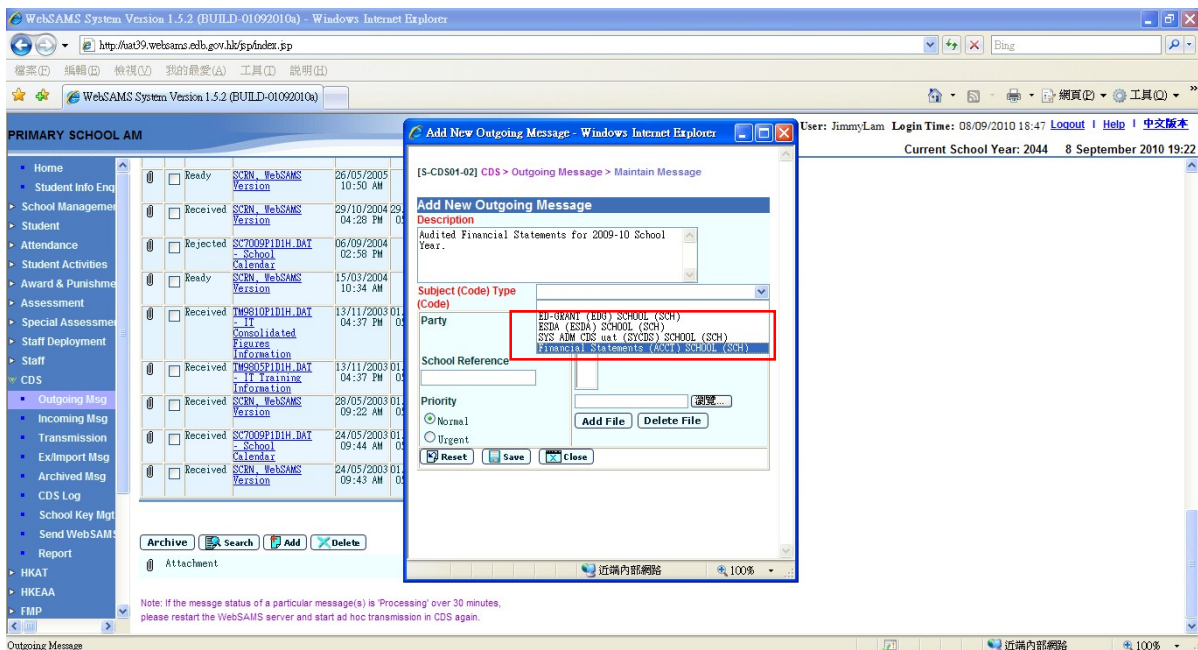


Procedures for Submitting Softcopy of Annual Audited Accounts Through Communication and Delivery System

(6) Click the drop-down list button for the field “Subject (Code) Type (Code)” (“主題(代碼) 類別(代碼)”).



(7) Select “Financial Statements (ACCT) SCHOOL (SCH)” (“財務報表(ACCT) 學校 (SCH)”) from the drop-down list.



Procedures for Submitting Softcopy of Annual Audited Accounts Through Communication and Delivery System

(8) Click the “瀏覽” button to locate the softcopy of annual audited accounts.

The screenshot displays the WebSAMS system interface. The main window is titled "PRIMARY SCHOOL AM" and shows a list of messages. A dialog box titled "Add New Outgoing Message" is open, allowing the user to create a new outgoing message. The dialog box contains the following fields and buttons:

- Description:** Audited Financial Statements for 2009-10 School Year.
- Subject (Code) Type:** Financial Statements (Abstract) School (SCH)
- Party:** EIB
- School Reference:** (Empty field)
- Priority:** Radio buttons for Normal and Urgent.
- Buttons:** Add File, Delete File, Reset, Save, Close.

A red box highlights the "瀏覽" (Browse) button next to the "Add File" button. The background shows a list of messages with columns for status, date, and time. The left sidebar contains a navigation menu with options like Home, Student Info Enq, School Management, Student, Attendance, Student Activities, Award & Punishment, Assessment, Special Assessment, Staff Deployment, Staff, CDS, Outgoing Msg, Incoming Msg, Transmission, Export/Import Msg, Archived Msg, CDS Log, School Key Mgt, Send WebSAMS Report, HKAT, HKCAA, and FMP.

Procedures for Submitting Softcopy of Annual Audited Accounts Through Communication and Delivery System

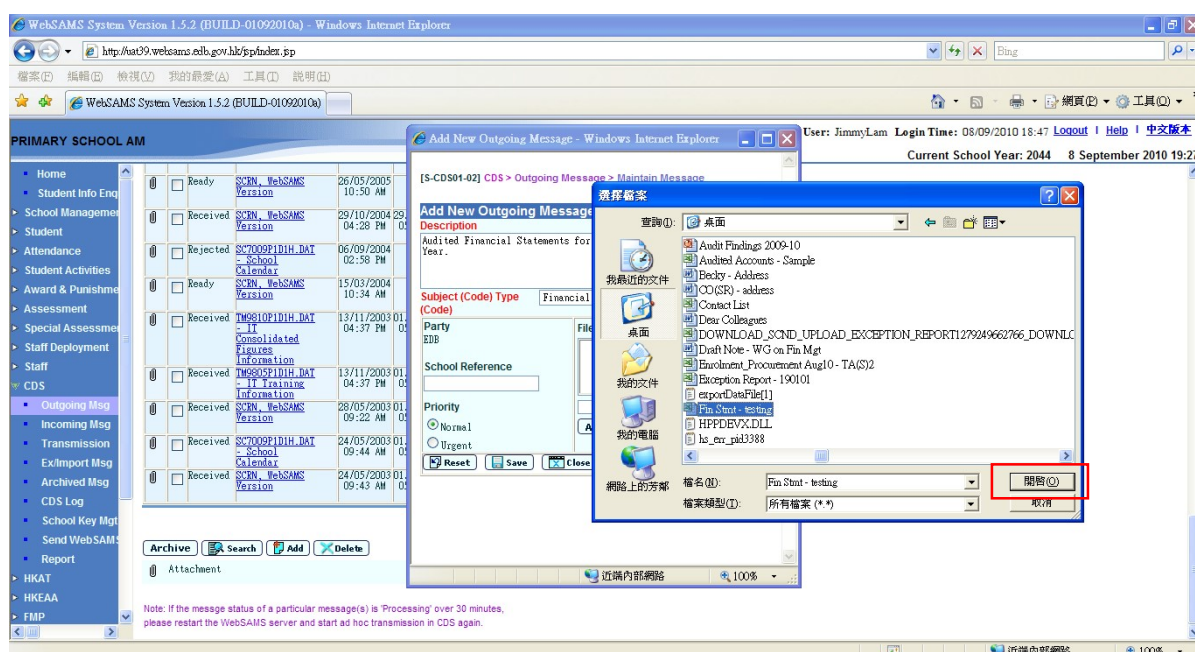
(9) In the “選擇檔案” pop-up window, search for the Excel file to be submitted to EDB and then click the “開啓(O)” button.

(IMPORTANT:

(i) Please use only the Excel template provided by EDB.

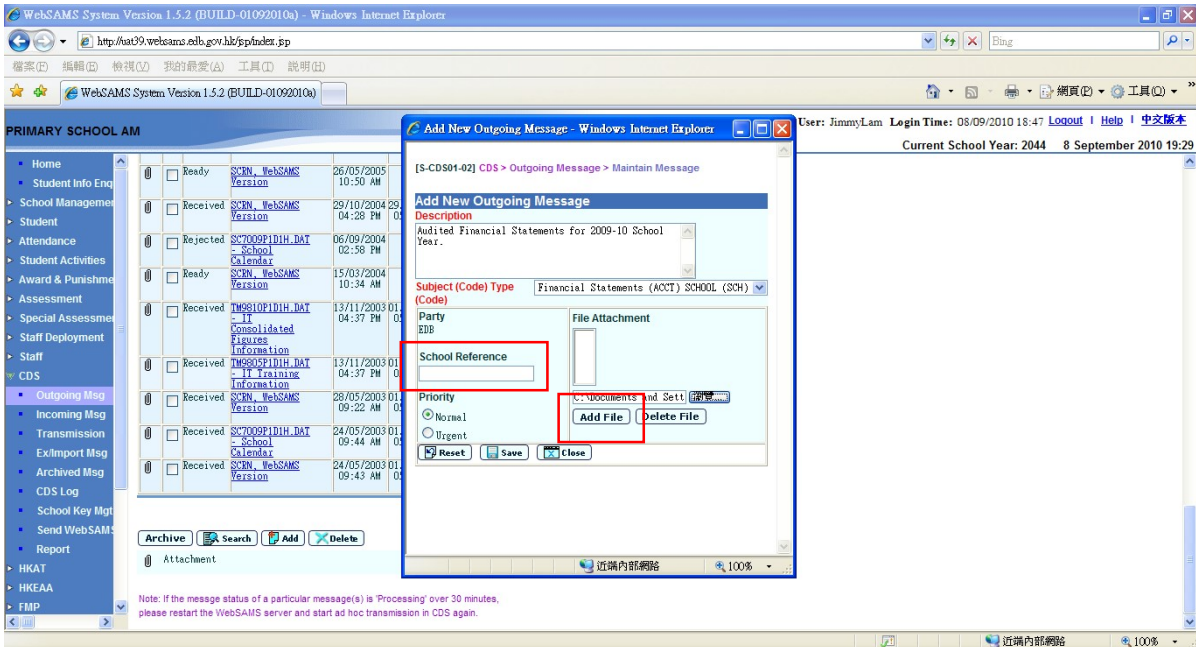
(ii) The file name must not include special character or space; and must not exceed **8 alpha-numeric** digits. For example, *abcd1234.xls* is acceptable while *abcd_123.xls* is not allowed.

(iii) Total file size of the attachment(s) should not exceed 10MB. Please zip the file(s) if necessary.)

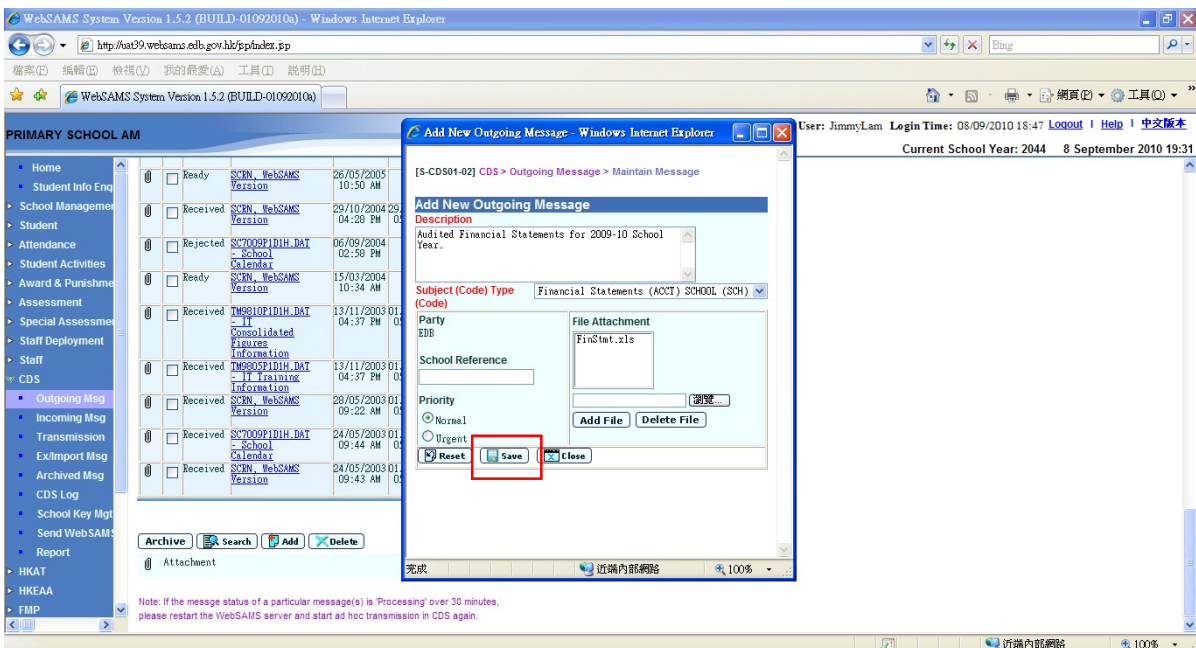


Procedures for Submitting Softcopy of Annual Audited Accounts Through Communication and Delivery System

- (10) Enter the “**School Reference**” (“學校參考編號”) for future reference (optional) and then click the “**Add File**” (“增新檔案”) button to submit the Excel file.

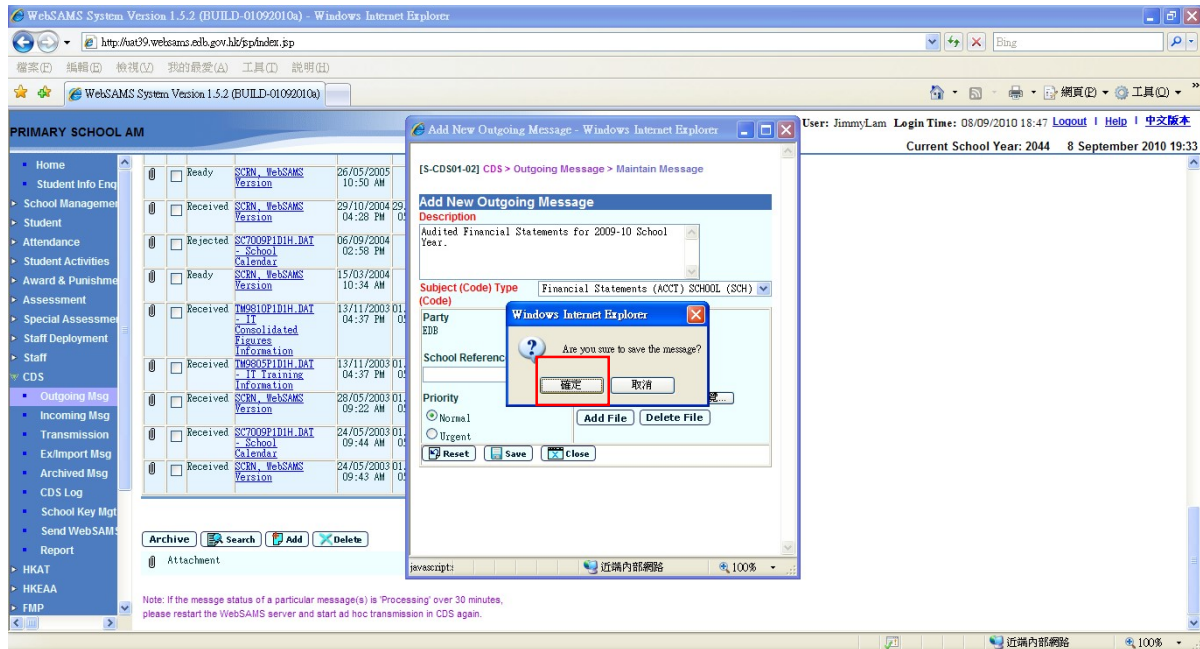


- (11) Click the “**Save**” (“儲存”) button to save changes made.

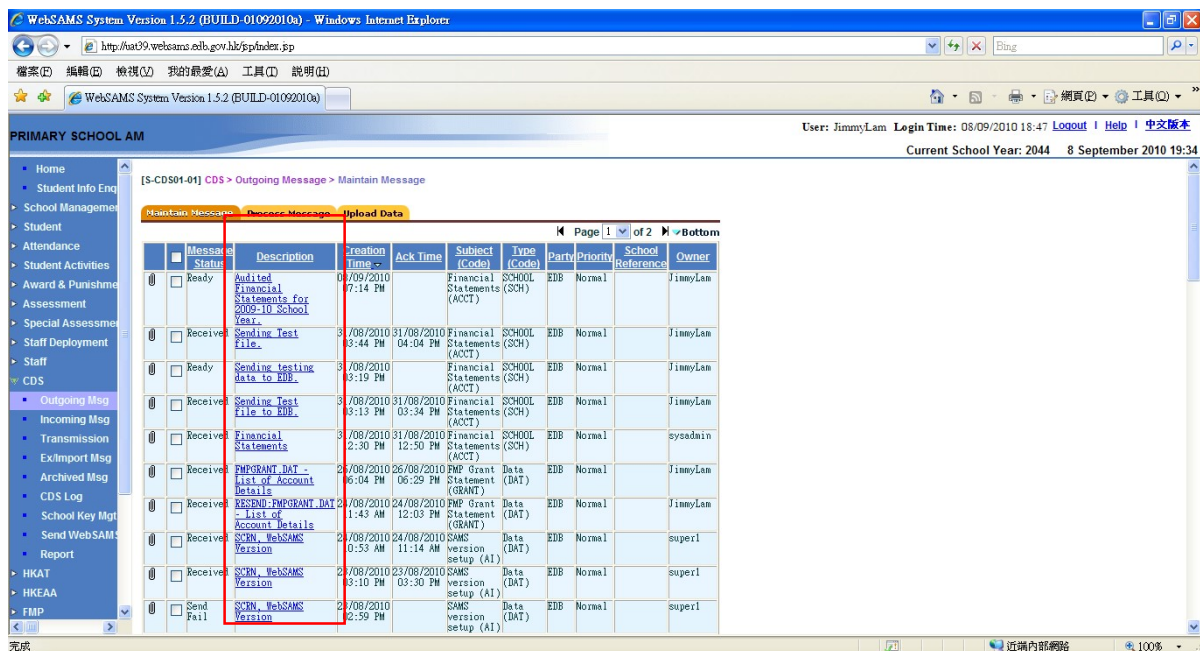


Procedures for Submitting Softcopy of Annual Audited Accounts Through Communication and Delivery System

(12) On the pop-up window, click “確定” to proceed.



(13) The two pop-up windows will be closed and you will be directed back to the “Maintain Message” (“編修訊息”) screen. On this screen, look for the “Description” (“訊息說明”) that you have just entered in Step 5 and then click on it.



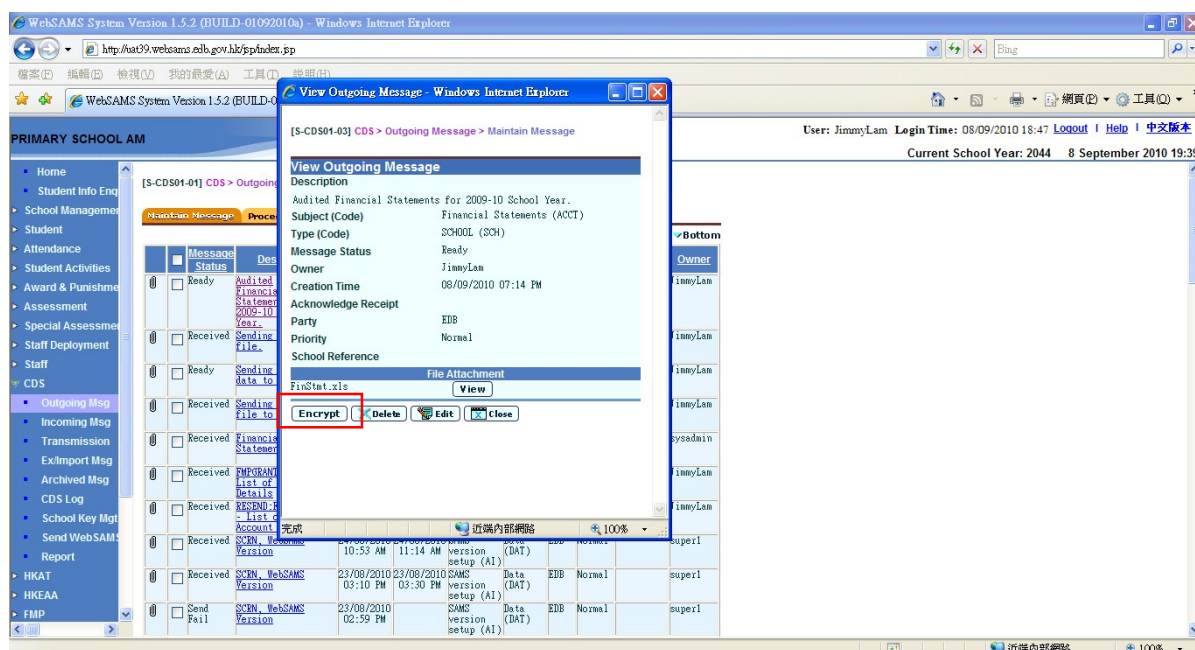
Procedures for Submitting Softcopy of Annual Audited Accounts Through Communication and Delivery System

(14) On the pop-up window, check the details and ensure that

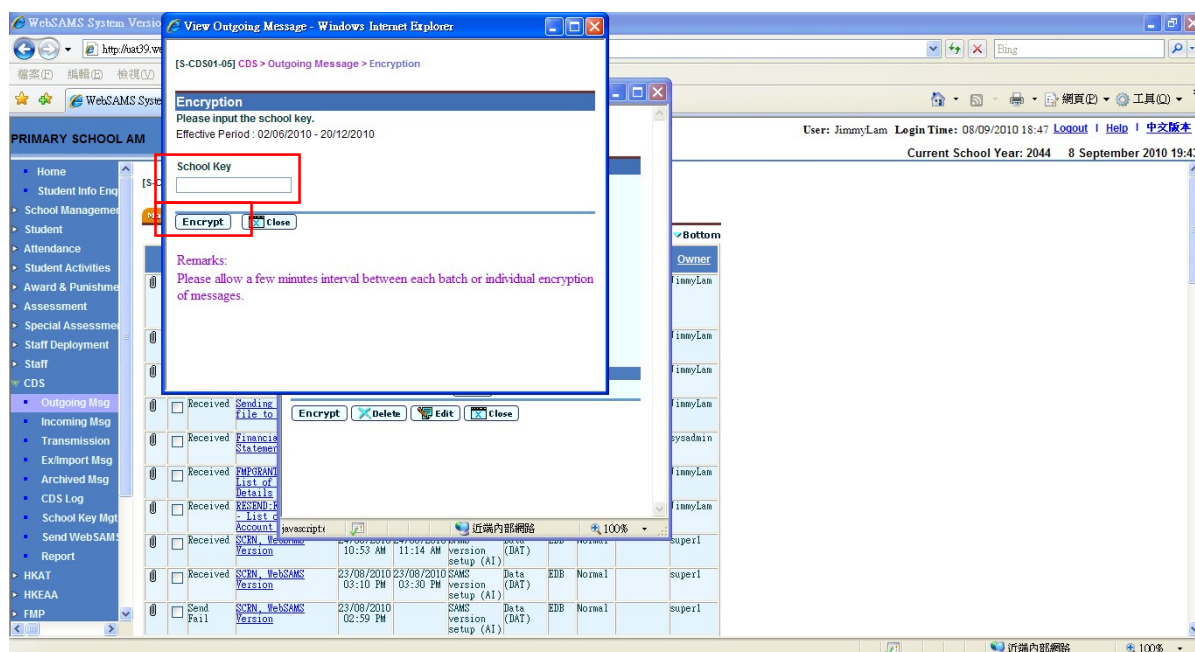
(1) the “**Subject Code**” (“主題代碼”) is “Financial Statements (ACCT)” (“財務報表 (ACCT)”); and

(2) the “**Type Code**” (“類別代碼”) is “SCHOOL (SCH)” (“學校(SCH)”).

Then, click the “**Encrypt**” (“加密”) button.

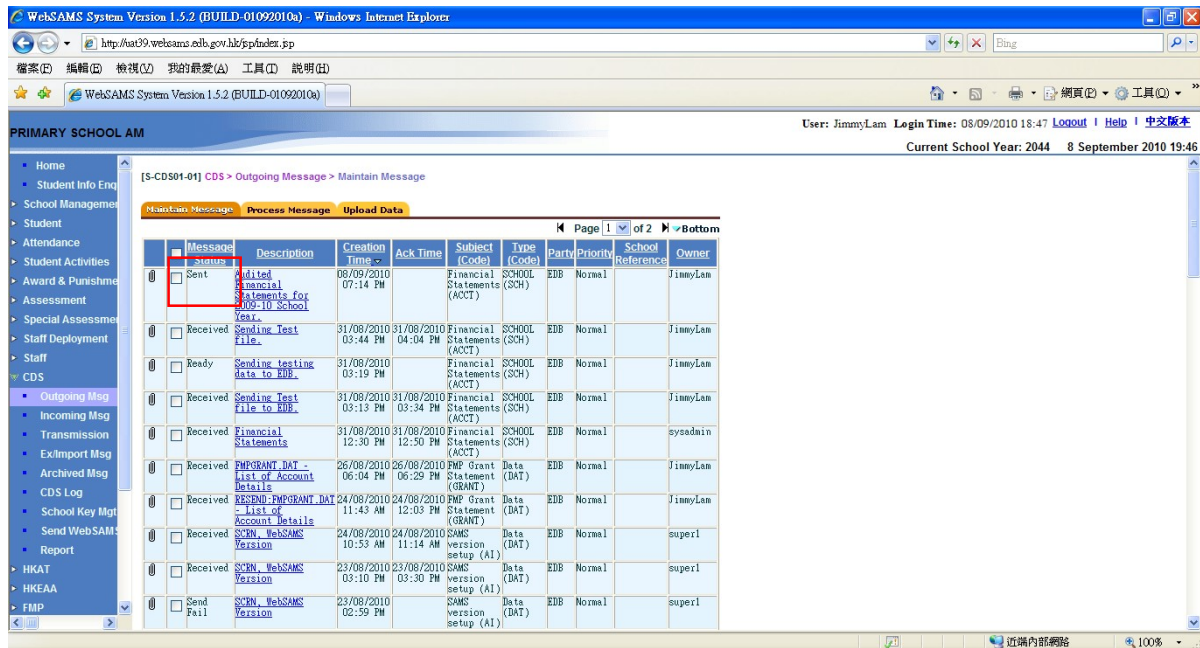
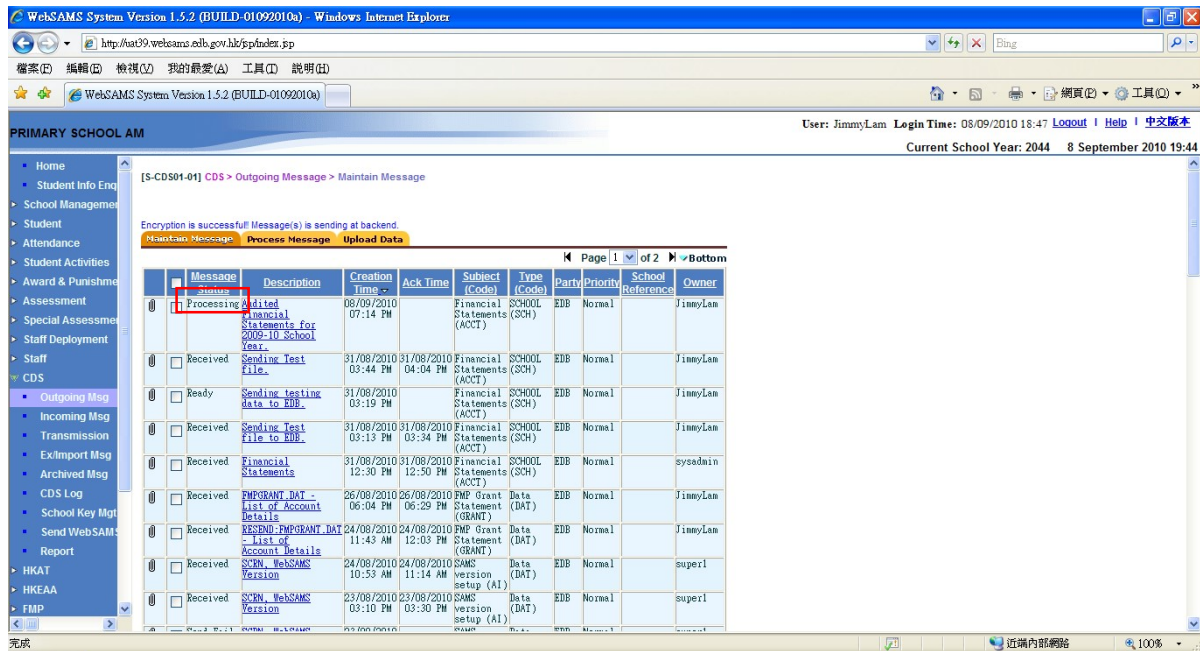


(15) Enter your “School Key” (“密碼匙”) and then click the “**Encrypt**” (“加密”) button.



Procedures for Submitting Softcopy of Annual Audited Accounts Through Communication and Delivery System

(16) The two pop-up windows will be closed and you will be directed back to the “Maintain Message” (“編修訊息”) screen. Please review the “Message Status” (“訊息狀況”), which will change from “Processing” (“處理中”) to “Sent” (“已輸出”) if the submission is successful.



Procedures for Submitting Softcopy of Annual Audited Accounts Through Communication and Delivery System

(17) The “**Message Status**” (“**訊息狀況**”) will further change to “**Received**” (“**已接收**”) after a while.

The screenshot shows the WebSAMS System interface. The browser title is 'WebSAMS System Version 2.0.1 (BUILD-26082011-Y) - Microsoft Internet Explorer'. The URL is 'http://uat78.websams.edu.gov.hk/asp/index.jsp'. The user is 'superi' and the login time is '02/09/2011 19:29'. The current school year is '2010' and the date is '2 September 2011 12:10'. The interface shows a navigation menu on the left and a main content area with a 'Maintain Message' form and a table of messages.

Message Status	Description	Creation Time	Ack Time	Subject Code	Type Code	Party	Priority	School Reference	Owner
Received	Audited Financial Statements For 2009-10 School Year	02/09/2011 07:52 PM	02/09/2011 12:09 PM	Financial Statements (ACCT)	SCHOOL (SCH)	EDB	Normal		superi
Received	SCRN_WebSAMS Version	24/08/2011 05:04 PM	24/08/2011 09:40 AM	SAMS version setup (AI)	Data (DAT)	EDB	Normal		sysadmin
Received	SC9970P1DIH - SCIS - School Emergency Contact Information	12/08/2011 08:15 PM	12/08/2011 12:48 PM	SCIM (SCIM)	Data (DAT)	EDB	Normal		irenewong
Received	SC9970P1DIH - SCIS - School Emergency Contact Information	12/08/2011 08:10 PM	12/08/2011 12:44 PM	SCIM (SCIM)	Data (DAT)	EDB	Normal		irenewong
Received	SCRN_WebSAMS Version	11/08/2011 05:39 PM	11/08/2011 10:12 AM	SAMS version setup (AI)	Data (DAT)	EDB	Normal		sysadmin
Ready	SC9970P1DIH - SCIS - School Emergency Contact Information	08/08/2011 04:21 PM		SCIM (SCIM)	Data (DAT)	EDB	Normal		peterpo
Ready	SC9970P1DIH - SCIS - School Emergency Contact Information	08/08/2011 10:17 AM		SCIM (SCIM)	Data (DAT)	EDB	Normal		schhead
Rejected	ST3008F1_DAT - Form B	22/07/2011 09:15 AM		STIM (STIM)	Data (DAT)	EDB	Normal		sysadmin
Rejected	ST3008F1_DAT - Form B	22/07/2011 09:12 AM		STIM (STIM)	Data (DAT)	EDB	Normal		sysadmin
Rejected	ST3008F1_DAT - Form B	22/06/2011 10:39 AM		STIM (STIM)	Data (DAT)	EDB	Normal		sysadmin
Received	ST3008F1_DAT - Form B	30/05/2011 01:55 PM	30/05/2011 03:21 PM	STIM (STIM)	Data (DAT)	EDB	Normal		sansuser
Received	ST3008F1_DAT - Form B	18/05/2011 09:27 AM	25/05/2011 11:31 AM	STIM (STIM)	Data (DAT)	EDB	Normal		sysadmin
Received	ST4005F1_DAT - Form A	16/05/2011 03:47 PM	16/05/2011 04:29 PM	STIM (STIM)	Data (DAT)	EDB	Normal		sysadmin
Ready	SCRN_WebSAMS Version	20/04/2011 11:05 AM		SAMS version setup (AI)	Data (DAT)	EDB	Normal		sysadmin
Received	ST4005F1_DAT - Form A	15/04/2011 03:31 PM	15/04/2011 04:10 PM	STIM (STIM)	Data (DAT)	EDB	Normal		sysadmin

If the “Message Status” changes to “Received”, the softcopy of annual audited accounts should have been submitted to the Education Bureau. You may then delete this message from CDS if you wish to.