

Education Bureau Circular Memorandum No. 49/2026

From: Secretary for Education

To: Supervisors/Heads of all
Secondary Schools
– for necessary action

Ref: EDB 1125-2015-8060-9015-00017

Date: 8 April 2026

Applied Learning Courses (2027-29 Cohort; 2029 HKDSE¹)

(Note: This circular memorandum should be read by heads and teachers of all secondary schools.)

Summary

The purpose of this circular memorandum is to announce the implementation details for the Applied Learning (ApL) courses (2027-29 Cohort; 2029 HKDSE), and invite schools to offer ApL courses and submit applications for their students.

Details

I. Basic Information

Course Features

2. There are three categories of subjects under the HKDSE: Category A (subjects under the Key Learning Areas), Category B (ApL), and Category C (Other Languages). In addition to the four Category A core subjects (i.e. Chinese Language, English Language, Mathematics, and Citizenship and Social Development), students may study elective subjects under Category A, Category B and Category C, in accordance with their interests, aspirations and abilities, so as to facilitate their diversified development.

3. ApL is a valued senior secondary elective subject which complements subjects under the other two categories to form a flexible subject combination that helps enrich students' subject choices and cater for learner diversity, providing broad and balanced learning experiences for students. ApL focuses on practical learning elements linked to vocational and professional fields with dual emphasis on theory and practice. It develops students' knowledge, generic skills, proper values and attitudes through simulated or authentic contexts, as well as deepens students' understanding of vocational and professional education and training (VPET), preparing them for further studies and work in future.

4. ApL covers six Areas of Studies, namely Creative Studies; Media and Communication; Business, Management and Law; Services; Applied Science; and Engineering and Production. In addition, Applied Learning Chinese (for non-Chinese speaking students) (ApL(C)) is provided exclusively for non-Chinese speaking (NCS) students meeting specified circumstances².

5. For important information such as the course quality assurance mechanism, assessment requirement, attendance requirement and recognition of ApL, please refer to *Annex 1*.

¹ HKDSE refers to the Hong Kong Diploma of Secondary Education Examination.

² Students who have learned Chinese Language for less than six years while receiving primary and secondary education; or students who have learned Chinese Language for six years or more in schools, but have been taught an adapted and simpler Chinese Language curriculum not normally applicable to the majority of students in local schools.

6. ApL courses are Category B subjects of the HKDSE. All senior secondary students studying the curriculum prepared by the Curriculum Development Council and published for use in schools by the Education Bureau (EDB) can take **a maximum of two** ApL courses as elective subjects³ in accordance with their interests and aspirations. NCS students meeting specified circumstances can in addition take one ApL(C) course. Guidelines for nominating students to take ApL courses and ApL(C) courses are provided at *Annex 2* and *Annex 3*, respectively.

7. The duration of each ApL course (except ApL(C)) is 180 contact hours, generally spanning two school years at the senior secondary level, commencing either at Secondary 4 (S4) (complete at Secondary 5 (S5)) or S5 (complete at Secondary 6 (S6)). The duration of each ApL(C) course is 270 contact hours, spanning S4 to S6. The results of ApL subjects for the 2027-29 cohort will be released on the results release day of the 2029 HKDSE⁴. Students must apply for ApL subjects through their schools in the relevant examination year.

Modes of Implementation

8. Schools may adopt the following two non-exclusive modes in implementing ApL courses to suit their school contexts. Details are as follows:

Mode 1	<ul style="list-style-type: none"> Lessons are held mainly on Saturdays at the venues of the course providers and delivered by tutors recognised by the course providers. Schools should arrange their students to attend the lessons according to the timetables set by the course providers.
Mode 2	<ul style="list-style-type: none"> Classes are open only to students from eligible schools which have entered into special agreements with the relevant course providers. Lessons can be held on weekdays or Saturdays and are taught by tutors recognised by the course providers. Schools have to reach an initial agreement and formulate the implementation details with the course providers, including timetables, class venues and provision of facilities. Subject to the facilities and equipment required for individual courses, lessons can be held in schools and/or at the venues of the course providers. (Remark: To cater for students' diverse learning and development needs, schools should carefully consider the number of Mode 2 classes of individual courses to be offered. EDB / course providers will contact the schools concerned, if necessary, to understand their situation and provide advice.) Schools may also consider collaborating with other schools to offer ApL courses with the support of the course providers. For instance, schools in the same / nearby districts may jointly offer one or more ApL courses with agreed implementation details, including timetables, class venues and provision of facilities, to enrich subject choices for their students. Schools interested in offering ApL courses in collaboration with other schools please complete <i>Annex 4</i> or <i>Annex 5</i> and submit it to EDB.

³ In general, each student can take a maximum of two ApL courses (except ApL(C)) as elective subjects throughout his/her studies at the senior secondary level.

⁴ For students who repeat Secondary 4, Secondary 5 or defer taking ApL courses due to special circumstances, please contact the Applied Learning Section of EDB or the Hong Kong Examinations and Assessment Authority for the administrative and results release arrangements if necessary.

Funding Arrangement

9. Aided secondary schools (including special schools with senior secondary classes), government secondary schools, caput schools and Direct Subsidy Scheme (DSS) secondary schools offering the local curriculum are eligible for the “Diversity Learning Grant (DLG) for ApL” and “Student Grant for ApL(C)” to offer ApL and ApL(C) courses and to pay the course fees charged by the respective course providers. Schools receiving the grants are **NOT** allowed to charge students any course fees. In case a student also takes the adapted ApL course(s), each adapted ApL course will be counted as an ApL course in the funding arrangement. Please refer to the funding and accounting arrangements at *Annex 6* and *Annex 7*.

II. Applied Learning Courses offered for the 2027-29 Cohort (2029 HKDSE)

10. Regarding the 2027-29 cohort, i.e. the cohort of students sitting the 2029 HKDSE, EDB has already approved a total of **55 ApL courses** for schools and students to choose from, including three ApL(Vocational English) (ApL(VocE)) courses and three ApL(C) courses. The course list is provided at *Annex 8*. The course information (including course synopses, key elements in learning and teaching) of the ApL courses will be uploaded to EDB website (www.edb.gov.hk/apl/en) in due course. Contact information of the course providers is available on EDB website (www.edb.gov.hk/apl/en/course-providers). According to the prevailing arrangement, **schools should arrange for students taking the ApL courses (2027-29 Cohort; 2029 HKDSE) to apply for entering the relevant ApL subjects in the 2029 HKDSE regardless of whether the students commence their study of ApL courses at S4 or S5.**



Applied Learning (Vocational English)

11. ApL(VocE) has been offered since the 2020/21 school year. It is designed to enhance the learning opportunities of students with diverse learning needs, particularly those who may benefit from a strong practical orientation in English language learning. Through ApL(VocE), students can advance their English communication skills and career-related competencies in simulated applied learning contexts related to work and social situations. **English Language is a core subject under the local senior secondary curriculum⁵; senior secondary students with an interest in VPET may consider taking ApL(VocE) as an elective subject** to prepare themselves for further studies and career pursuits. The duration of each ApL(VocE) course is 180 contact hours. For more information about ApL(VocE), please visit EDB webpage (www.edb.gov.hk/apl/ApL_Eng).



12. Students’ assessment results in ApL(VocE) are reported in three levels: “Attained”, “Attained with Distinction (I)”, and “Attained with Distinction (II)” on the HKDSE certificate. **The result in this subject is not deemed equivalent to any level in the HKDSE English Language Examination, nor can it be used as an alternative qualification for English Language.**

Applied Learning Chinese (for non-Chinese speaking students)

13. ApL(C) has been implemented since the 2014/15 school year. It aims to provide NCS students who meet specified circumstances with different simulated applied learning contexts, so they can apply listening, speaking, reading and writing skills in the learning process in an integrated way. This helps them build a foundation for using Chinese in the workplace and obtain an alternative Chinese language qualification to prepare for further studies and career pursuits.

⁵ Under the adapted curriculum for students with Intellectual Developmental Disorder, English Language is not a core subject.

14. Schools admitting NCS students should consider whether to offer ApL(C) courses at S4 taking into account their language ability, interests and aspirations. Please refer to the guidelines for nominating students to take ApL(C) courses at *Annex 3*, and other relevant information on ApL(C) on EDB website (www.edb.gov.hk/en/aplc).



III. Application Procedures and Relevant Information

Application Procedures

15. Schools intending to offer ApL courses and ApL(C) courses should submit applications for their students via the Applied Learning System (ApL System) during the following application periods, and arrange the student applicants to participate in the selection arrangements according to the announcement to be made by the course providers in due course. The application periods are as follows:

Course	Target Student	Application Period
ApL	Students intending to take ApL courses commencing at S4 in the 2026/27 school year	21 April to 20 May 2026
	Students intending to take ApL courses commencing at S5 in the 2027/28 school year	15 February to 2 April 2027
ApL(C)	S4 NCS students intending to take ApL(C) courses in the 2026/27 school year	7 October to 3 November 2026

16. Schools may make reference to the application procedures stated in the “User Manual for ApL System (For Schools)” uploaded on the website (www.edb.gov.hk/en/curriculum-development/cross-kla-studies/applied-learning/ref-and-resources/apl-system/index.html) (path: home page > Curriculum Development and Support > Cross Disciplinary Subjects/Areas > Applied Learning > References & Resources > ApL System). The important dates on offering ApL and ApL(C) courses are given at *Annex 9* to *Annex 11*.



Support for Students and Parents

17. Schools should arrange appropriate activities to deepen students and parents’ understanding of ApL courses and provide students with guidance on subject selection in order to help them make informed choices. For example, schools may organise talks for students and parents, distribute the ApL course leaflet, encourage them to study the ApL course prospectus, participate in the Taster Programmes of ApL, and browse the webpages of the course providers. For details of the Taster Programmes of ApL, please refer to *Annex 12*.

Support for Teachers

18. To facilitate schools in implementing ApL courses for the 2027-29 cohort (2029 HKDSE), **EDB will organise an online briefing session on 29 April 2026**, as well as professional development programmes/seminars for teachers in the 2026/27 school year. Details will be announced on the Training Calendar System in due course.

Enquiry

19. Please refer to the Frequently Asked Questions (FAQs) on ApL and other relevant information on the ApL webpage (www.edb.gov.hk/apl/en). For enquiries, please call the following contact persons:



(a) General enquiries and ApL System	Applied Learning Section (Tel: 3698 3186)
(b) ApL(C) – curriculum matters	Dr Joseph LI (Tel: 2892 5893)
(c) English-related ApL courses – curriculum matters	Dr Eddy LI (Tel: 2892 5454)

Ben HUNG
for Secretary for Education

c.c. Heads of Sections – *for information*

Important Information on Applied Learning

Quality Assurance Mechanism

1. The Education Bureau (EDB) has institutionalised an Applied Learning (ApL) quality assurance mechanism involving the Curriculum Development Council Committee on ApL, the Hong Kong Council for Accreditation of Academic and Vocational Qualifications, and the Hong Kong Examinations and Assessment Authority (HKEAA) to ensure that courses are developed according to the design principles; the curriculum is delivered as designed; and the learning outcomes of students can meet the set standards.

Assessment Requirement

2. ApL courses are Category B subjects of the Hong Kong Diploma of Secondary Education Examination (HKDSE), and there is no public examination for ApL subjects. The assessment of each ApL subject comprises six to ten tasks undertaken within the period of study. Course providers will conduct the assessments of their respective ApL subjects while the HKEAA is responsible for moderation of the assessment results submitted by the course providers. After moderation, the results of “Attained” or above will be recorded on the HKDSE certificate.

Attendance Requirement

3. Students taking ApL courses are required to attend lessons (e.g. lecture and e-learning) and other learning activities (e.g. application and practice activities, site visits and project learning) arranged by the course providers. Schools should support students in their learning, avoid arranging other compulsory activities for students during the ApL lesson time as much as possible, and remind students to attend ApL lessons punctually. **The attendance rate of ApL courses has to reach at least 80% of the total contact hours.** To keep schools informed of students’ attendance and learning progress, EDB will provide schools with the attendance reports, assessment reports and learning progress reports of students, thereby enabling schools to provide timely and appropriate support to students.

Reporting of Performance

4. The results for students’ performance in ApL subjects (except for ApL(C)) **are reported in three levels, namely, “Attained”, “Attained with Distinction (I)” and “Attained with Distinction (II)”**. Performance of “Attained with Distinction (I)” is deemed comparable to Level 3 of Category A subjects of the HKDSE; and “Attained with Distinction (II)” is deemed comparable to Level 4 or above of Category A subjects of the HKDSE. **As for ApL(C), students’ performance is reported in two levels as “Attained” and “Attained with Distinction”**. For all ApL subjects, students with performance below the standard of “Attained”, or whose attendance rates are below 80%, will be designated as “Unattained” and the results will not be reported on the HKDSE certificate.

Recognition

5. In addition to the HKDSE qualification, students who have successfully completed ApL courses that are registered in the Qualifications Register (as certificate programmes at Qualifications Framework (QF) Level 3) will obtain QF certificates issued by the course providers. **ApL(C) is pegged at QF Level 1 to Level 3, and ApL(VocE) at QF Level 2 to Level 3.** Students taking ApL(C)/ApL(VocE) will obtain the respective QF certificate(s) issued by the course providers upon meeting the assessment and attendance requirements of different QF levels of the courses. Details are available at the Qualifications Register website (www.hkqr.gov.hk).



Further Studies and Employment

6. Student admission in post-secondary institutions has followed the principle of institutional autonomy. For further studies in undergraduate programmes, institutions value the learning experiences that students acquire in ApL. ApL subjects are recognised as elective subjects, or considered for award of extra bonus or as additional information, varying by individual institutions, faculties or programmes.

7. For further studies in sub-degree programmes, the minimum entrance requirements for Associate Degree or Higher Diploma Programmes are Level 2 in five HKDSE subjects (including Chinese Language and English Language), applicants may use results of ApL subjects in this connection. For details, please refer to the relevant websites of individual institutions or EDB website (www.edb.gov.hk/apl/en/quality-assurance-and-recognition).



8. ApL(C) provides NCS students meeting specified circumstances with an additional channel to obtain an alternative Chinese Language qualification. **For the purpose of admission to post-secondary education programmes, ApL(C) is in general accepted as an alternative Chinese Language qualification, but it is not considered an elective subject** (please refer to EDB Circular Memorandum No. 40/2017 for details). Currently, University Grants Committee-funded universities and most post-secondary institutions accept ApL(C) as an alternative qualification in Chinese Language for the admission of NCS students, with “Attained” as the minimum grade required. For details on recognition, please refer to the relevant websites of individual institutions or EDB website (www.edb.gov.hk/apl/en/quality-assurance-and-recognition).





9. For employment, the Civil Service Bureau (CSB) accepts students’ ApL results in the HKDSE (including “Attained” and “Attained with Distinction”, up to a maximum of two ApL subjects) in civil service appointments. For details, please refer to the CSB website (www.csb.gov.hk/english/info/2170.html). The CSB also accepts “Attained” and “Attained with Distinction” in ApL(C) as meeting the Chinese language proficiency requirements of relevant civil service ranks. For details, please also refer to the CSB website (www.csb.gov.hk/english/admin/appoint/35.html).



Guidelines on Nominating Students for Applied Learning Courses





(excluding Applied Learning Chinese (for non-Chinese speaking students) Courses)

Schools may refer to the following guidelines in nominating students for Applied Learning (ApL) courses:

1. ApL complements core subjects, elective subjects and Other Learning Experiences to allow flexible subject combination, which helps provide students with opportunities for theoretical learning and practices, thereby catering for their diverse learning needs and offering diversified learning experiences for them.
2. Schools should provide guidance to students in choosing ApL courses in accordance with their interests and aspirations.
3. Schools should **NOT** prioritise their nominations solely based on students' academic results.
4. Generally, each student can **take a maximum of two** ApL courses (excluding Applied Learning Chinese (for non-Chinese speaking students)) throughout his/her studies at the senior secondary level. When applying for two ApL courses, students have to list their choices in order of preference. Students have to go through a selection process, after which they may opt to accept offers of **one or two ApL** courses based on their preferences.
5. Before collecting students' personal data, schools must seek students' consent and provide the "Student Agreement Form" to all students applying for ApL courses. The form can be downloaded from EDB website (www.edb.gov.hk/apl/en/forms-download). The completed forms should then be collected for retention by the school. In accordance with the Personal Data (Privacy) Ordinance, schools should ensure that all students' personal data is handled by authorised personnel only. 
6. For students with **special educational needs**, schools may opt to submit supplementary information, along with their applications for ApL courses, for the reference of the course provider(s) concerned. The form can be downloaded from EDB website (www.edb.gov.hk/apl/en/forms-download). The completed form should be sent to EDB via **the ApL System** for referral to the course provider(s) concerned as reference. The course provider(s) may contact the schools concerned to make special selection arrangements for the students concerned if deemed necessary. EDB encourages schools to keep in close contact with the course providers about the special educational needs of students, so as to support them in the ApL courses. 

Guidelines on Nominating Students for Applied Learning Chinese (for non-Chinese speaking students) Courses

Schools may refer to the following guidelines in nominating students for Applied Learning Chinese (for non-Chinese speaking students) (ApL(C)) courses:

1. ApL(C) is introduced to provide an additional channel exclusively for **non-Chinese speaking (NCS) students** meeting specified circumstances to obtain an alternative Chinese language qualification to prepare them for further studies and career pursuits.
2. Students meeting specified circumstances are those who have learned Chinese Language for less than six years while receiving primary and secondary education; or students who have learned Chinese Language for six years or more in schools, but have been taught an adapted and simpler Chinese Language curriculum not normally applicable to the majority of students in local schools.
3. ApL(C) emphasises application and practice, taking daily life or vocational areas as the learning context. Schools should assist NCS students in considering applying for ApL(C) in accordance with their language ability, interests and aspirations, and provide guidance and support for NCS students in choosing the appropriate Chinese language curriculum. Each NCS student **can apply for and take one ApL(C) course only**.
4. NCS students who aspire to apply for and take ApL(C) should have basic language competency to enable them to learn the Chinese language through different modes of activities in a simulated applied learning context. At the point of entry for the study of ApL(C) courses, they are expected to have achieved most of the learning outcomes of the “Chinese Language Curriculum Second Language Learning Framework” (“Learning Framework”) at level 4 or above. Upon completion of ApL(C) courses, NCS students are expected to have achieved the relevant learning outcomes of the “Learning Framework” at level 6 or above. Details of the Learning Framework are available at EDB website (www.edb.gov.hk/en/curriculum-development/kla/chi-edu/second-lang.html). 
5. Before collecting students’ personal data, schools must seek students’ consent and provide the “Student Agreement Form” to all students applying for ApL(C) courses. The form can be downloaded from EDB website (www.edb.gov.hk/apl/en/forms-download). The completed forms should then be collected for retention by the school. In accordance with the Personal Data (Privacy) Ordinance, schools should ensure that all students’ personal data is handled by authorised personnel only. 
6. For students with **special educational needs**, schools may opt to submit supplementary information, along with their applications for ApL(C) courses, for the reference of the course provider(s) concerned. The form can be downloaded from EDB website (www.edb.gov.hk/apl/en/forms-download). The completed form should be sent to EDB via **the ApL System** for referral to the course provider(s) concerned as reference. The course provider(s) may contact the schools concerned to make special selection arrangements for the students concerned if deemed necessary. EDB encourages schools to keep in close contact with the course providers about the special educational needs of students, so as to support them in the ApL(C) course. 
7. For details of ApL(C) courses, please refer to the ApL(C) website (www.edb.gov.hk/en/aplc). 

III. Information of the ApL Courses to be Offered in Collaboration with Other Schools

Course provider			
Course name		Estimated no. of students	
Start date (month/year)		End date (month/year)	
Remarks (Please put a “√” in the appropriate box.)	<p>1. Has your school already reached an initial consensus with other school(s) in offering the ApL course through collaboration?</p> <p><input type="checkbox"/> Yes <input type="checkbox"/> No</p> <p>2. Is your school willing to provide venues/facilities for conducting ApL lessons for students of other schools?</p> <p><input type="checkbox"/> Yes <input type="checkbox"/> No</p>		

IV. Information of Collaborating Schools (if applicable)

School name	Host school (Use “√” to indicate)	No. of students
1		
2		
3		
4		

V. Other suggestions/views (if applicable)

--

III. Information of the ApL Courses to be Offered in Collaboration with Other Schools

Course provider			
Course name		Estimated no. of students	
Start date (month/year)		End date (month/year)	
Remarks (Please put a “√” in the appropriate box.)	<p>1. Has your school already reached an initial consensus with other school(s) in offering the ApL course through collaboration?</p> <p><input type="checkbox"/> Yes <input type="checkbox"/> No</p> <p>2. Is your school willing to provide venues/facilities for conducting ApL lessons for students of other schools?</p> <p><input type="checkbox"/> Yes <input type="checkbox"/> No</p>		

IV. Information of Collaborating Schools (if applicable)

School name	Host school (Use “√” to indicate)	No. of students
1		
2		
3		
4		

V. Other suggestions/views (if applicable)

--

**Funding and Accounting Arrangements for
Diversity Learning Grant for Applied Learning
(2027-29 Cohort; 2029 HKDSE)**

Diversity Learning Grant

1. The Diversity Learning Grant (DLG) supports aided secondary schools (including special schools with senior secondary classes), government secondary schools, caput schools and Direct Subsidy Scheme (DSS) secondary schools in offering a diversified senior secondary curriculum to cater for students' different learning needs. Schools may use the grant to provide different programme choices for senior secondary students studying the local curriculum, including Applied Learning (ApL) courses. It is a cash grant for aided secondary schools (including special schools with senior secondary classes), caput schools and DSS secondary schools. For government secondary schools, it is in the form of budget allocation.
2. The DLG for ApL will be provided to the above eligible schools on a yearly basis for the implementation of ApL courses provided by the course providers and approved by the Education Bureau (EDB). Schools receiving the grant are **NOT** allowed to charge students any course fees.

Ambit

3. Students in the above eligible schools studying the senior secondary curriculum prepared by the Curriculum Development Council and published for use in schools by EDB are subsidised under the DLG for ApL⁶ for their study of ApL courses. Generally, each eligible student is entitled to funding for **a maximum of two** ApL courses throughout his/her studies at the senior secondary level⁷ (excluding Applied Learning Chinese (for non-Chinese speaking students)).
4. The DLG for ApL for the 2027-29 cohort can only be used to subsidise students taking ApL courses for the 2027-29 cohort and cannot be mixed with the same grant for other cohorts. The DLG for ApL can only be used to settle the course fees charged by the course providers. Schools must not use this grant for offering courses under the ambit of "Diversity Learning Grant - Other Languages" and "Diversity Learning Grant - Other Programmes", capital purchases, overheads or maintenance, etc.

Funding Arrangement

5. Schools will be disbursed/allocated with an amount of DLG for ApL which is equal to the total course fee for ApL courses enrolled by eligible students. The DLG for ApL for the 2027-29 cohort will be disbursed/allocated to schools in **two equal instalments** during the two-year course duration. Details of the funding arrangement are as follows:

⁶ Students no longer meeting the requirements as stated in paragraph 3 above due to any reason (e.g. departed from schools) will not be eligible for the DLG for ApL. However, if such students have successfully completed their first year study of ApL courses, they may continue their second year study of ApL courses at their own expense with the consent of the respective course providers and EDB.

⁷ In case a student also takes the adapted ApL course(s), each adapted ApL course will be counted as an ApL course in the funding arrangement.

Funding arrangement	ApL courses commencing at Secondary 4 in the 2026/27 school year	ApL courses commencing at Secondary 5 in the 2027/28 school year
First instalment		
Informing schools of the provisional amount of the grant by EDB*	August 2026	August 2027
Disbursement/allocation of the grant to schools by EDB	November 2026	November 2027
Second instalment		
Informing schools of the provisional amount of the grant by EDB*	August 2027	August 2028
Disbursement/allocation of the grant to schools by EDB	November 2027	November 2028

* EDB will inform schools of the provisional amount of DLG for ApL via the Fast Information Transmission System - School Messaging Module (FITS - SMM). Schools should verify the student enrolment information and the amount of allocation of the DLG for ApL as stated in the Notice for Provisional Amount of DLG for ApL, as well as validate the information (including student reference number, student name, class and course details) in the enrolment summary of the Applied Learning System. Upon receipt of the confirmation from schools, disbursement/allocation of the DLG for ApL will be made by EDB based on the actual number of students (based on the headcount of the respective cohort). Details of the arrangement will be announced via FITS - SMM.

Accounting Arrangements

6. Schools should pay course fees to the course providers in two equal instalments. Instalments of course fees would be calculated based on the actual number of students enrolled in the respective school years. Besides, schools may apply for course fee reduction from the course providers should there be venues, facilities, equipment provided, or school teachers contributing to the teaching of ApL courses, etc.

7. Schools are required to observe the established principles and requirements on the use of public funds as promulgated by EDB when using the DLG for ApL. For aided secondary schools (including special schools with senior secondary classes), caput schools and DSS secondary schools, a separate ledger account named “**DLG for ApL (2027-29 cohort)**” should be kept in the school ledger account under the **Government Fund** to properly record all income and expenditure chargeable to ApL courses. All books of accounts, receipts, payment vouchers and invoices, etc. must be kept for at least 7 years by schools for accounting and auditing purposes. Schools should adhere to the EDB’s requirements set out in the relevant circular memoranda/letters as well as their appendices to prepare ledger accounts and annual accounts, and submit the annual audited accounts to EDB. If schools fail to submit the annual audited accounts by the date specified by EDB, they may be required to return the grant in full to EDB. The surplus in the ledger account can be carried forward to the next school year until **31 August 2029**. Any unspent balance of the grant will be clawed back. Transfer of funds and/or its unspent balance out of this grant is not allowed. In case of a deficit in the ledger account, schools can top up the grant by deploying other resources tabulated below by the end of the respective school years:

School type	Resources to be deployed by schools
Aided secondary schools (including special schools with senior secondary classes)	<ul style="list-style-type: none"> • Capacity Enhancement Grant (CEG) • Surplus in the General Domain of Operating Expenses Block Grant (OEBG) / Expanded OEBG • Substitute Teacher Grant / Teacher Relief Grant (TRG) • Schools' own funds
Government secondary schools	<ul style="list-style-type: none"> • Expanded Subject and Curriculum Block Grant • TRG
Caput schools	<ul style="list-style-type: none"> • CEG • Fee Subsidy • Schools' own funds
DSS secondary schools	<ul style="list-style-type: none"> • CEG • DSS Subsidy • Schools' own funds

8. Schools still facing financial difficulties in offering the ApL courses after deploying other resources may approach EDB to explain their practical difficulties. EDB will consider providing appropriate support, taking into account the specific situations of individual schools.

9. For government secondary schools, the expenditure should be charged to the user code assigned for "DLG for ApL (2027-29 cohort)". The grant is financial year-based and the expenditure should not exceed the allocation in the respective financial years. Separate allocation for the unspent balance (if any) of the preceding financial year will be provided at the beginning of the next financial year, and any unspent balance of the grant will lapse **after 31 August 2029**. Transfer of funds and/or its unspent balance out of this grant is not allowed. In case of deficit, schools can top up the grant by deploying the resources as set out in paragraph 7.

**Funding and Accounting Arrangements for
Student Grant for Applied Learning Chinese (for non-Chinese speaking students)
(2027-29 Cohort; 2029 HKDSE)**

Student Grant for Applied Learning Chinese (for non-Chinese speaking students)

1. The Student Grant for Applied Learning Chinese (for non-Chinese speaking students) (Student Grant) supports aided secondary schools (including special schools with senior secondary classes), government secondary schools, caput schools and Direct Subsidy Scheme (DSS) schools to offer Applied Learning Chinese (for non-Chinese speaking students) (ApL(C)) courses. It is a cash grant for aided secondary schools (including special schools with senior secondary classes), caput schools and DSS secondary schools. For government secondary schools, it is in the form of budget allocation.

Ambit

2. The above eligible schools offering ApL(C) courses are provided with the Student Grant to pay for the course fees. Full subsidies will be provided to schools to support each eligible non-Chinese speaking student in taking **one** ApL(C) course. Schools receiving the Student Grant are **NOT** allowed to charge students any course fees.

3. The Student Grant (2027-29 cohort) can only be used to subsidise students taking ApL(C) courses for the 2027-29 cohort by settling the course fees charged by the course providers. Schools must not use this grant for offering other ApL courses, capital purchases, overheads or maintenance, etc.

Funding Arrangement

4. Schools will be disbursed/allocated with an amount of Student Grant which is equal to the total course fee for ApL(C) courses enrolled by eligible students. The Student Grant will be disbursed/allocated to schools in **three equal instalments**. Details of the funding arrangement are as follows:

Funding arrangement	ApL(C) courses for the 2027-29 cohort
First instalment	
Informing schools of the provisional amount of the grant by EDB ^{#*}	January 2027
Disbursement/allocation of the grant to schools by EDB	March 2027
Second instalment	
Informing schools of the provisional amount of the grant by EDB [*]	August 2027
Disbursement/allocation of the grant to schools by EDB	November 2027
Third instalment	
Informing schools of the provisional amount of the grant by EDB [*]	August 2028
Disbursement/allocation of the grant to schools by EDB	November 2028

Provisional grants and adjustment of grants (if applicable) for the first instalment for government schools will be allocated in January and February 2027 respectively to tie in with the accounting arrangement.

* EDB will inform schools of the provisional amount of the Student Grant via the Fast Information Transmission System - School Messaging Module (FITS - SMM). Schools should verify the student enrolment information and the amount of the Student Grant as stated in the Notice for Provisional Amount of the Student Grant, as well as validate the information (including student reference number, student name, class and course details) in the enrolment summary of the Applied Learning System. Upon receipt of the confirmation from schools, disbursement/allocation of the Student Grant will be made by EDB based on the actual number of students (based on the headcount of the respective cohort). Details of the arrangement will be announced via FITS - SMM.

Accounting Arrangements

5. Schools should pay course fees to the course providers in three equal instalments. Instalments of course fees would be calculated based on the actual number of students enrolled in the respective school years. Besides, schools may apply for course fee reduction from the course providers should there be venues, facilities, equipment provided, or school teachers contributing to the teaching of ApL(C) courses, etc.

6. Schools are required to observe the established principles and requirements on the use of public funds as promulgated by EDB when using the Student Grant. For aided secondary schools (including special schools with senior secondary classes), caput schools and DSS secondary schools, a separate ledger account named “**Student Grant for Applied Learning Chinese (for non-Chinese speaking students) (2027-29 cohort)**” should be kept in the school ledger account under the **Government Fund** to properly record all income and expenditure. All books of accounts, receipts, payment vouchers and invoices, etc. must be kept for at least 7 years by schools for accounting and auditing purposes. Schools should adhere to the EDB’s requirements set out in the relevant circular memoranda/letters as well as their appendices to prepare ledger accounts and annual accounts, and submit the annual audited accounts to EDB. If schools fail to submit the annual audited accounts by the date specified by EDB, they may be required to return the grant in full to EDB. The surplus in the ledger account can be carried forward to the next school year until **31 August 2029**. Any unspent balance of the Student Grant will be clawed back. Transfer of funds and/or its unspent balance out of this grant is not allowed. In case of a deficit in the ledger account, schools can top up the grant by deploying other resources tabulated below by the end of the respective school years:

School type	Resources to be deployed by schools
Aided secondary schools (including special schools with senior secondary classes)	<ul style="list-style-type: none"> • Capacity Enhancement Grant (CEG) • Surplus in the General Domain of Operating Expenses Block Grant (OEBG) / Expanded OEBG • Substitute Teacher Grant / Teacher Relief Grant (TRG) • Schools’ own funds
Government secondary schools	<ul style="list-style-type: none"> • Expanded Subject and Curriculum Block Grant • TRG
Caput schools	<ul style="list-style-type: none"> • CEG • Fee Subsidy • Schools’ own funds
DSS secondary schools	<ul style="list-style-type: none"> • CEG • DSS Subsidy • Schools’ own funds

7. Schools still facing financial difficulties in offering the ApL(C) courses after deploying other resources may approach EDB to explain their practical difficulties. EDB will consider providing appropriate support, taking into account the specific situation of individual schools.

8. For government secondary schools, the expenditure should be charged to the user code assigned for Student Grant for ApL(C) (2027-29 cohort). The grant is financial year-based and the expenditure should not exceed the allocation in the respective financial years. Separate allocation for the unspent balance (if any) of the preceding financial year will be provided at the beginning of the next financial year, and any unspent balance of the grant will lapse **after 31 August 2029**. Transfer of funds and/or its unspent balance out of this grant is not allowed. In case of deficit, schools can top up the grant by deploying the resources as set out in paragraph 6.

應用學習課程一覽表
(2027-29 年度；2029 年香港中學文憑考試)
List of Applied Learning Courses
(2027-29 Cohort; 2029 HKDSE)

學習範疇 Area of Studies	課程組別 Course Cluster	科目代碼 Subject Code	課程 ^{註一} Course ^{NOTE 1}	課程提供機構 ^{註二} Course Provider ^{NOTE 2}	教學語言 Medium of Instruction	課程費用 ^{註三} Course Fee ^{NOTE 3} (\$)
創意學習 Creative Studies	設計學 Design Studies	736	文創產品設計 Cultural and Creative Product Design	VTC	中文或英文 Chinese or English	20,100
		676	時裝形象設計 Fashion Image Design	VTC	中文或英文 Chinese or English	17,830
		668	室內與活動空間設計 Interior and Event Spatial Design	VTC	中文或英文 Chinese or English	16,050
	媒體藝術 Media Arts	669	電腦遊戲及動畫設計 Computer Game and Animation Design	VTC	中文或英文 Chinese or English	16,050
		707	數碼漫畫設計與製作 Digital Comic Design and Production	HKU (SPACE)	中文或英文 Chinese or English	16,500
		710	流行音樂製作 Popular Music Production	HKCT	中文 Chinese	23,700
	表演藝術 Performing Arts	599	舞出新機－舞蹈藝術 Taking a Chance on Dance	HKAPA	中文 Chinese	22,900
		677	由戲開始·劇藝縱橫 The Essentials of Theatre Arts	HKAPA	中文 Chinese	21,400
媒體及傳意 Media and Communication	電影、電視與廣播學 Films, TV and Broadcasting Studies	711	數碼媒體及電台製作 Digital Media and Radio Production	HKU (SPACE)	中文或英文 Chinese or English	18,900
		702	電影製作 Film Production	VTC	中文或英文 Chinese or English	16,230
	媒體製作與公共關係 Media Production and Public Relations	718	數碼廣告 Digital Advertising	HKU (SPACE)	中文或英文 Chinese or English	18,300
		719	多媒體故事 Multimedia Storytelling	▲ HKBU (SCE)	中文或英文 Chinese or English	18,950
		708	公關及多媒體傳訊 PR and Multimedia Communication	▲ HKCT	中文或英文 Chinese or English	15,700
	語言及文化 Language and Culture	715	應用學習(職業英語)－英文傳意 Applied Learning (Vocational English) – English Communication	* VTC	英文 English	18,530
		723	應用學習(職業英語)－商用服務英語 Applied Learning (Vocational English) – English for Business Services	* HKCT	英文 English	20,400
		716	應用學習(職業英語)－服務業專業英語 Applied Learning (Vocational English) – English for Service Professionals	* HKU (SPACE)	英文 English	21,010
		746	創意產業英語 English for the Creative Industries	UOWCHK	英文 English	17,900
		732	生活日語及日本文化 Everyday Japanese and Japanese Culture	HKU (SPACE)	中文及日語 Chinese and Japanese	18,500

學習範疇 Area of Studies	課程組別 Course Cluster	科目代碼 Subject Code	課程 註一 Course NOTE 1	課程提供機構 註二 Course Provider NOTE 2	教學語言 Medium of Instruction	課程費用 註三 Course Fee NOTE 3 (\$)
商業、管理及法律 Business, Management and Law	會計及金融 Accounting and Finance	744	會計實踐 Accounting in Action	VTC	中文或英文 Chinese or English	19,500
	商業學 Business Studies	693	人工智能應用—商業數據 AI Application in Business Data	HKIT	中文或英文 Chinese or English	10,700
		734	創新與創業 Innovation and Entrepreneurship	HKU (SPACE)	中文或英文 Chinese or English	20,950
		730	金融科技入門 Introduction to Fintech	HKU (SPACE)	中文或英文 Chinese or English	19,000
		740	意見領袖市場學與生成式人工智能 KOL Marketing and Generative AI	UOWCHK	中文或英文 Chinese or English	19,500
		737	現代物流學 Modern Logistics Studies	UOWCHK	中文 Chinese	18,000
	法律學 Legal Studies	672	香港執法實務 Law Enforcement in Hong Kong	HKBU (SCE)	中文或英文 Chinese or English	17,500
服務 Services	食品服務及管理 Food Services and Management	688	甜品及咖啡店營運 Pâtisserie and Café Operations	# HKCT	中文或英文 Chinese or English	19,500
		616	西式食品製作 Western Cuisine	# VTC	中文或英文 Chinese or English	18,050
	款待服務 Hospitality Services	709	機場營運與服務 Airport Operations and Services	HKCT	中文或英文 Chinese or English	22,500
		615	酒店營運 Hotel Operations	VTC	中文或英文 Chinese or English	16,980
	個人及社區服務 Personal and Community Services	704	幼兒發展 Child Care and Development	■ CICE	中文或英文 Chinese or English	18,000
		665	幼兒教育 Child Care and Education	■ VTC	中文或英文 Chinese or English	16,230
		747	長者社區照顧及支援 Elderly Community Care and Support	TWC	中文 Chinese	19,800
		610	美容學基礎 Fundamental Cosmetology	CICE	中文 Chinese	15,800
應用科學 Applied Science	環境科學 Environmental Science	745	環境、社會及管治—環境評估 ESG – Environmental Assessment	UOWCHK	中文或英文 Chinese or English	19,400
	食物科學 Food Science	735	食品科技及營養 Food Technology and Nutrition	VTC	中文或英文 Chinese or English	18,990
	醫療科學及健康護理 Medical Science and Health Care	592	中醫藥學基礎 Foundation in Chinese Medicine	HKU (SPACE)	中文 Chinese	17,000
		618	健康護理實務 Health Care Practice	CICE	中文或英文 Chinese or English	17,250
		660	醫務化驗科學 Medical Laboratory Science	HKU (SPACE)	中文或英文 Chinese or English	19,600
		741	寵物護理及美容 Pet Care and Grooming	VTC	中文或英文 Chinese or English	24,500
		713	復康護理實務 Rehabilitation Care Practice	CICE	中文或英文 Chinese or English	19,200
	心理學 Psychology	691	實用心理學 Practical Psychology	HKBU (SCE)	中文或英文 Chinese or English	17,350

學習範疇 Area of Studies	課程組別 Course Cluster	科目代碼 Subject Code	課程 ^{註一} Course ^{NOTE 1}	課程提供機構 ^{註二} Course Provider ^{NOTE 2}	教學語言 Medium of Instruction	課程費用 ^{註三} Course Fee ^{NOTE 3} (\$)	
運動 Sports		674	運動及體適能教練 Exercise and Fitness Coaching	#	HKCT	中文或英文 Chinese or English	16,100
		627	運動科學及體適能 Exercise Science and Health Fitness	#	HKBU (SCE)	中文或英文 Chinese or English	20,260
工程及生產 Engineering and Production	土木、電機及機械工程 Civil, Electrical and Mechanical Engineering	727	智能數碼建築 Digital Construction		VTC	中文或英文 Chinese or English	16,050
		683	電機及能源工程 Electrical and Energy Engineering		VTC	中文或英文 Chinese or English	17,050
	資訊工程 Information Engineering	722	人工智能與機械人 AI and Robotics		HKU (SPACE)	中文或英文 Chinese or English	18,600
		738	網絡安全 Cybersecurity		HKCT	中文或英文 Chinese or English	19,500
		714	電競科技與管理 eSports Technology and Management		HKU (SPACE)	中文或英文 Chinese or English	18,900
		706	資訊科技精要 Tech Basics		HKBU (SCE)	中文或英文 Chinese or English	19,800
	服務工程 Services Engineering	640	航空學 Aviation Studies		HKU (SPACE)	中文或英文 Chinese or English	16,500
		698	鐵路學 Railway Studies		HKCT	中文或英文 Chinese or English	20,300
		742	無人機與低空經濟 UAV and Low-altitude Economy		UOWCHK	中文或英文 Chinese or English	19,500
	應用學習中文 (非華語學生適用) Applied Learning Chinese (for non-Chinese speaking students)		700	實用情境中文 Chinese in Practical Context	❖	HKBU (SCE)	中文 Chinese
		743	傳意中文 Communicative Chinese	❖	HKU (SPACE)	中文 Chinese	27,600
		699	實務中文 Practical Chinese	❖	HKCT	中文 Chinese	43,500

註一 NOTE 1

除香港中學文憑資歷外，學生成功完成已載錄於資歷名冊的應用學習課程（屬於資歷架構第三級證書課程），亦會獲課程提供機構頒發資歷架構證書。應用學習中文與資歷架構第一級至第三級掛鉤，而應用學習（職業英語）則與資歷架構第二級至第三級掛鉤。修讀應用學習中文／應用學習（職業英語）的學生，達到不同級別的評核及出席率要求，會獲課程提供機構頒發有關課程相應級別的資歷架構證書。詳情可瀏覽資歷名冊網頁（www.hkqr.gov.hk）。

In addition to the HKDSE qualification, students who have successfully completed ApL courses that are registered in the Qualifications Register (as certificate programmes at Qualifications Framework (QF) Level 3) will obtain QF certificates issued by the course providers. Applied Learning Chinese (for non-Chinese speaking students) (ApL(C)) is pegged at QF Level 1 to Level 3, and Applied Learning (Vocational English) (ApL(VocE)) at QF Level 2 to Level 3. Students taking ApL(C)/ApL(VocE) will obtain the respective QF certificate(s) issued by the course providers upon meeting the assessment and attendance requirements of different QF levels of the courses. Details are available at the Qualifications Register website (www.hkqr.gov.hk).



- ▲ 學生只可修讀一個「▲」標示的課程。
For courses marked with “▲”, only **one** course could be taken by a student.
- * 學生只可修讀一個「*」標示的課程。
For courses marked with “*”, only **one** course could be taken by a student.
- # 學生在同一個課程組別內只可修讀一個「#」標示的課程。
For courses marked with “#”, only **one** course in the course cluster could be taken by a student.
- 學生只可修讀一個「■」標示的課程。
For courses marked with “■”, only **one** course could be taken by a student.
- ❖ 學生只可修讀一個「❖」標示的課程。
For courses marked with “❖”, only **one** course could be taken by a student.

註二 NOTE 2

課程提供機構 Course Provider	
CICE	明愛社區書院 Caritas Institute of Community Education
HKAPA	香港演藝學院 The Hong Kong Academy for Performing Arts
HKBU(SCE)	香港浸會大學持續教育學院 School of Continuing Education, Hong Kong Baptist University
HKCT	香港專業進修學校 Hong Kong College of Technology
HKIT	香港科技專上書院 Hong Kong Institute of Technology
HKU(SPAC)	香港大學專業進修學院 School of Professional and Continuing Education, The University of Hong Kong
TWC	東華學院 Tung Wah College
UOWCHK	香港伍倫貢學院 UOW College Hong Kong
VTC	職業訓練局 Vocational Training Council

註三 NOTE 3

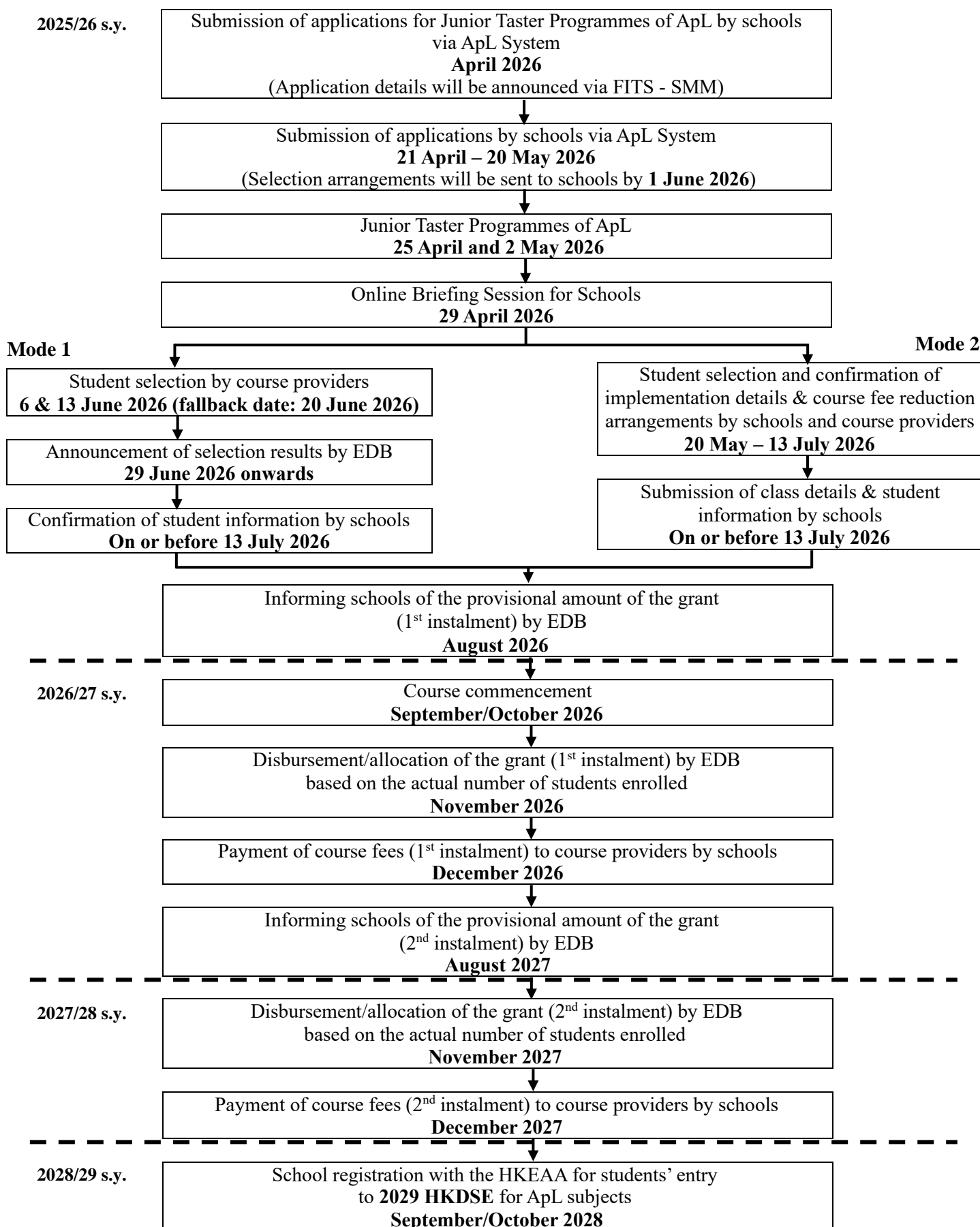
在資助中學（包括開設高中班級的特殊學校）、官立中學、按位津貼學校及直接資助計劃中學修讀由課程發展議會所編訂並由教育局公布之高中課程的學生，將獲教育局全數資助課程費用。

Students in aided secondary schools (including special schools with senior secondary classes), government secondary schools, caput schools and Direct Subsidy Scheme secondary schools studying the senior secondary curriculum prepared by the Curriculum Development Council and published for use in schools by the Education Bureau (EDB) will be fully subsidised by EDB to take ApL courses.

Important Dates

Annex 9

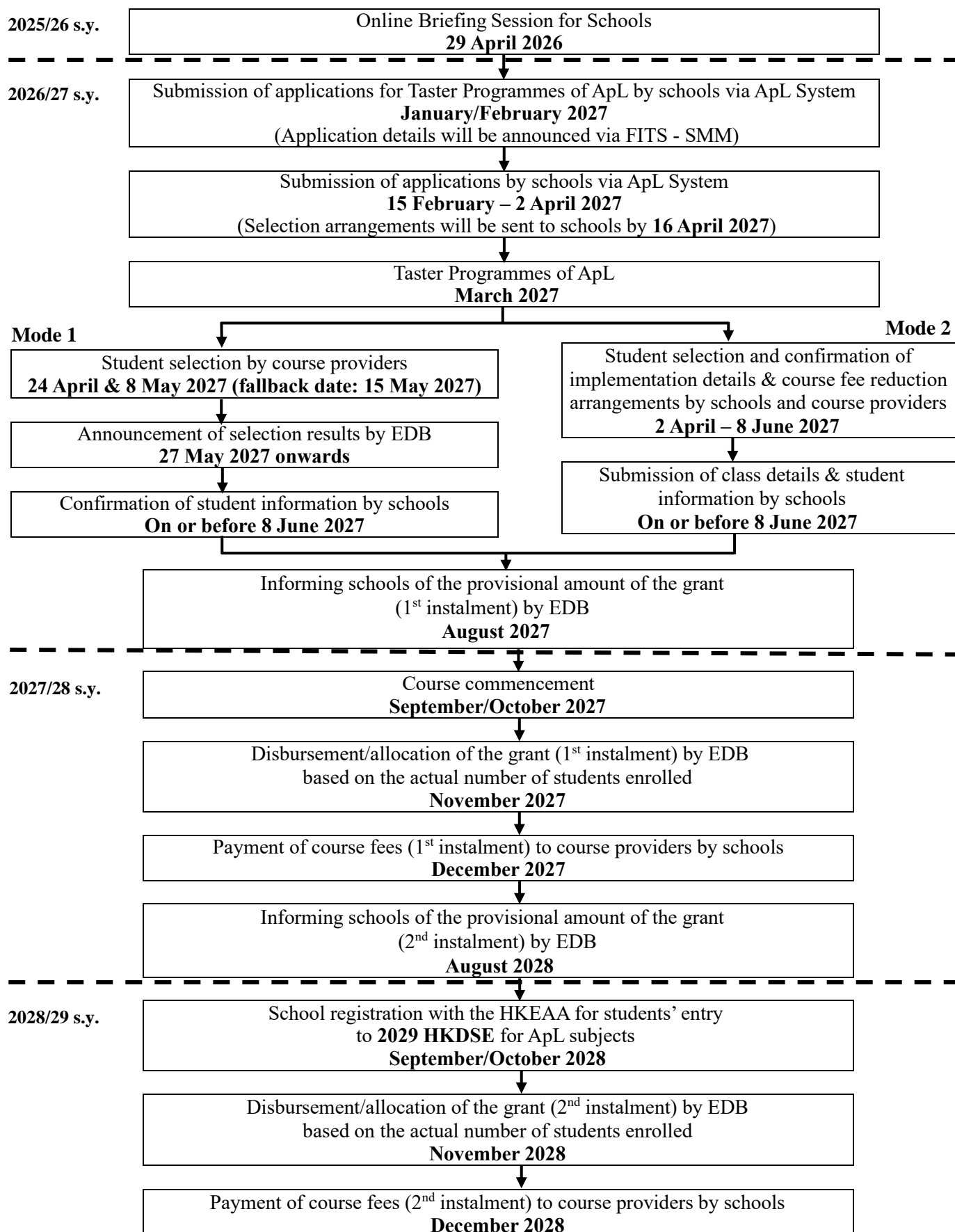
for Applied Learning Courses (2027-29 Cohort; 2029 HKDSE) Commencing at Secondary 4 in the 2026/27 School Year



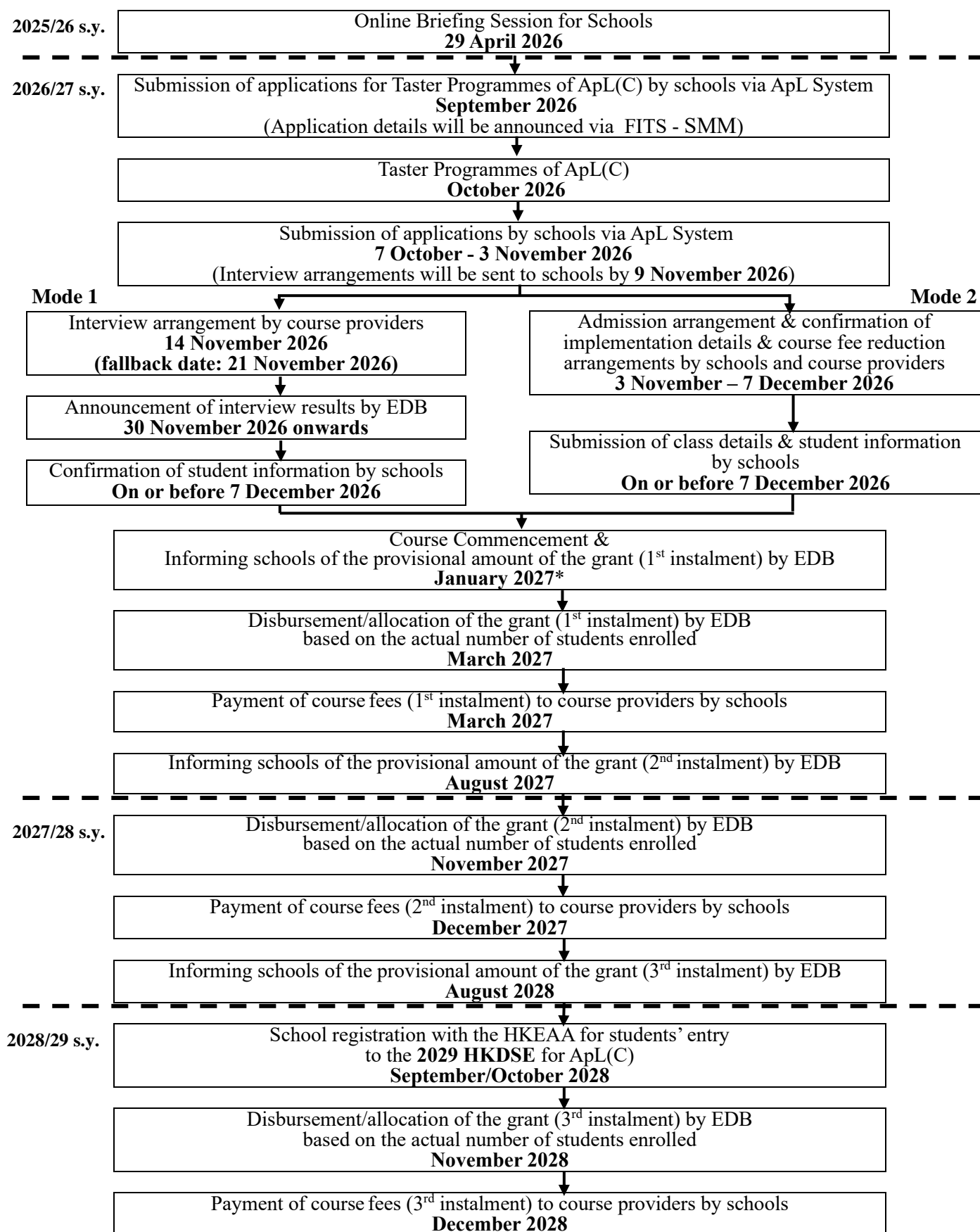
Important Dates

Annex 10

**for Applied Learning Courses (2027-29 Cohort; 2029 HKDSE)
Commencing at Secondary 5 in the 2027/28 School Year**



**for Applied Learning Chinese (for non-Chinese speaking students) Courses
(2027-29 Cohort; 2029 HKDSE)**



* Provisional amount of Student Grant and adjustment of Student Grant (if applicable) for the first instalment for government schools will be allocated in January and February 2027 respectively to tie in with the accounting arrangement.

**Taster Programmes of Applied Learning
(2027-29 Cohort; 2029 HKDSE)**

*(Details will be announced through the Fast Information Transmission System –
School Messaging Module (FITS – SMM))*

Courses	Target Group	Date	Remarks
Junior Taster Programmes of ApL	S2 and S3 students	25 April and 2 May 2026	Course introduction, demonstration and workshops will be provided by course providers to enable students to experience the learning of ApL courses and ApL(C) courses.
Taster Programmes of ApL(C)	S4 students	October 2026	
Taster Programmes of ApL	S4 students	March 2027	

Note:

- For details on leaflet distribution, please pay attention to messages from EDB sent to schools via FITS - SMM.